

NCVHS Testimony NHIN Functional Requirements

Gary L. Dickinson
CentrifyHealth
27 July 2006

Minimum Function Rankings

Rankings

XXX Essential

XX Important

X Optional, Desirable

Based on NCVHS NHIN Functional Categories

Functional Category	NHIN	Edge
Audit and Logging: <ul style="list-style-type: none"> • Traceability End-to-End: Source to Receiver • Record Creation and Amendment • Record/Data Interchange 	XXX XXX XXX	N/A XXX XX
Authentication: <ul style="list-style-type: none"> • Verified Identity of Users • Verified Identity of Edge Systems • Verified Source/Authorship of Records/Data 	XXX XXX XXX	XXX XXX XXX
Authorization: <ul style="list-style-type: none"> • Individual Health Records: Access to Specific Patient's Record • Operations: Access to System Functions • Content: Access to Record/Data Content 	XXX XXX XXX	XXX XXX XXX

Functional Category	NHIN	Edge
<p>Confidentiality, ensured by:</p> <ul style="list-style-type: none"> • Credentialing of Users and Systems • User/System Authentication • Source/Authorship Authentication • Authorization • Audit and Logging • End-to-End Traceability of Record Interchange • Identity/Information Correlation 	<p>XXX</p> <p>XXX</p> <p>XXX</p> <p>XXX</p> <p>XXX</p> <p>XXX</p> <p>XXX</p>	<p>XXX</p> <p>XXX</p> <p>XXX</p> <p>XXX</p> <p>XXX</p> <p>XXX</p> <p>XXX</p>
<p>Credentialing:</p> <ul style="list-style-type: none"> • Individuals • Organizations • Communicating Systems • Per Individual, Organization or System <u>Role</u> 	<p>XXX</p> <p>XXX</p> <p>XXX</p> <p>XXX</p>	<p>XXX</p> <p>XXX</p> <p>XXX</p> <p>XXX</p>

Functional Category	NHIN	Edge
Data Access and Update: <ul style="list-style-type: none"> • System Level Data Access/Update • User Data Access/Update 	XXX N/A	XXX XXX
Data Content, enabling: <ul style="list-style-type: none"> • Health Record: Traceable to Persistent Source • Extracted Subset of Health Record: Traceable to Persistent Source • Other Record or Data: NOT Traceable • Interchange Artifacts: transient messages 	XXX XXX XXX XXX	XXX XXX XXX XXX
Data Filtering: <ul style="list-style-type: none"> • Including Anonymized, Aliased Records/Data 	XXX	XXX

Functional Category	NHIN	Edge
Data Mapping/Translation: <ul style="list-style-type: none"> • Including Audit and Logging • Translation Preserves Original Content 	XXX XXX	XXX XXX
Data Quality/Data Integrity: <ul style="list-style-type: none"> • Enable Measures of Record/Data Accuracy, Consistency and Completeness (ref. JCAHO) 	XXX	XXX
Data Rendering: <ul style="list-style-type: none"> • Includes Data Mapping/Translation • Data Presentation to User 	XXX N/A	XXX XXX
Data Retrieval (pull): <ul style="list-style-type: none"> • Query with Conditional Parameters • Returned Records/Data Constrained by Source Rules 	XXX XXX	XXX XXX

Functional Category	NHIN	Edge
Data Routing: <ul style="list-style-type: none"> • Based on Rules 	XXX	XXX
Data Source: <ul style="list-style-type: none"> • Authenticated as to Record/Data Source Organization, Individual (author) and System • As Location where Persistent Legal Record is Retained 	XXX N/A	XXX XXX
Data Transmission (Push): <ul style="list-style-type: none"> • Based on Rules • Include Subscribe and Publish 	XXX XXX	XXX XXX
Data Usage: <ul style="list-style-type: none"> • In User Context 	N/A	XXX

Functional Category	NHIN	Edge
Identity/Information Correlation: <ul style="list-style-type: none"> Record/Data Bound to Subject: Patient Record/Data Bound to Source: Individual, Organization, System 	XXX XXX	XXX XXX
Persistent Data Storage	N/A	XXX
Record Location	XXX	XX
Transient Data	XXX	N/A
Add: Anonymous, Aliased Data	XXX	XXX

Key Standards

HL7 EHR Functional Model

- Specifies Functional Characteristics (functions) of EHR systems
- Includes EHR Interoperability Functions
- Is Framework for CCHIT EHR Certification
- Now: Normative Standard - In Ballot

Key Standards

HL7 EHR Interoperability Model

- Specifies Interoperability Characteristics of EHR records
- Complementary with EHRS Functional Model
- Now: Draft Standard for Trial Use - In Ballot

Key Standards

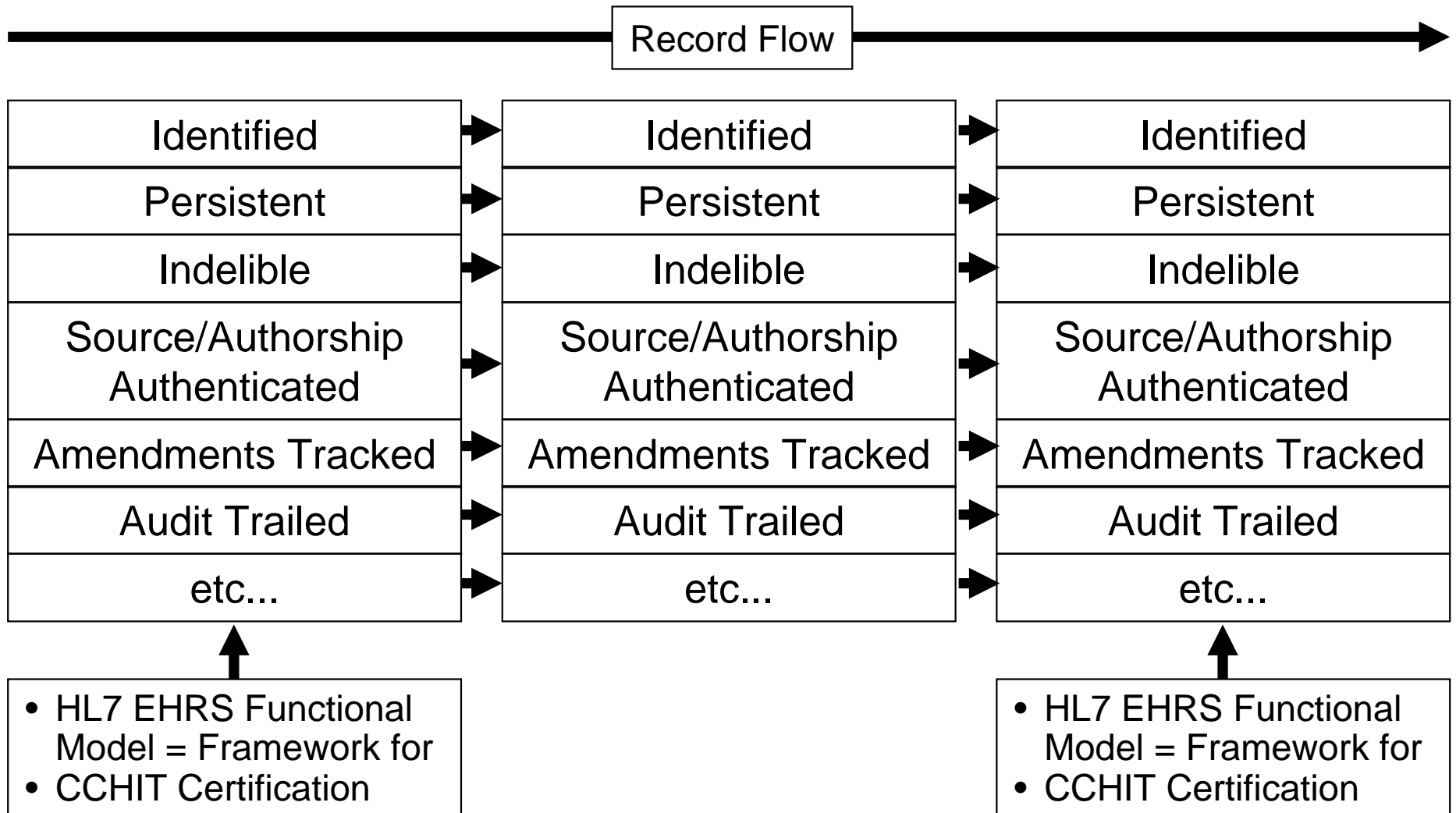
ISO 21089 - Trusted Flows

- ISO 21089 - Health Informatics - Trusted End-to-End Information Flows
- Specifies Persistent Health Record at Key Points in its Flow and Lifecycle:
 - Origination, Amendment, Translation, Verification
 - Access/Use
 - Transmittal and Receipt
 - Archival
 - Anonymization, Aliasing
 - etc.

SOURCE
EHRs/Application
Interoperability Function

NETWORK or
Intermediary
Interoperability Function

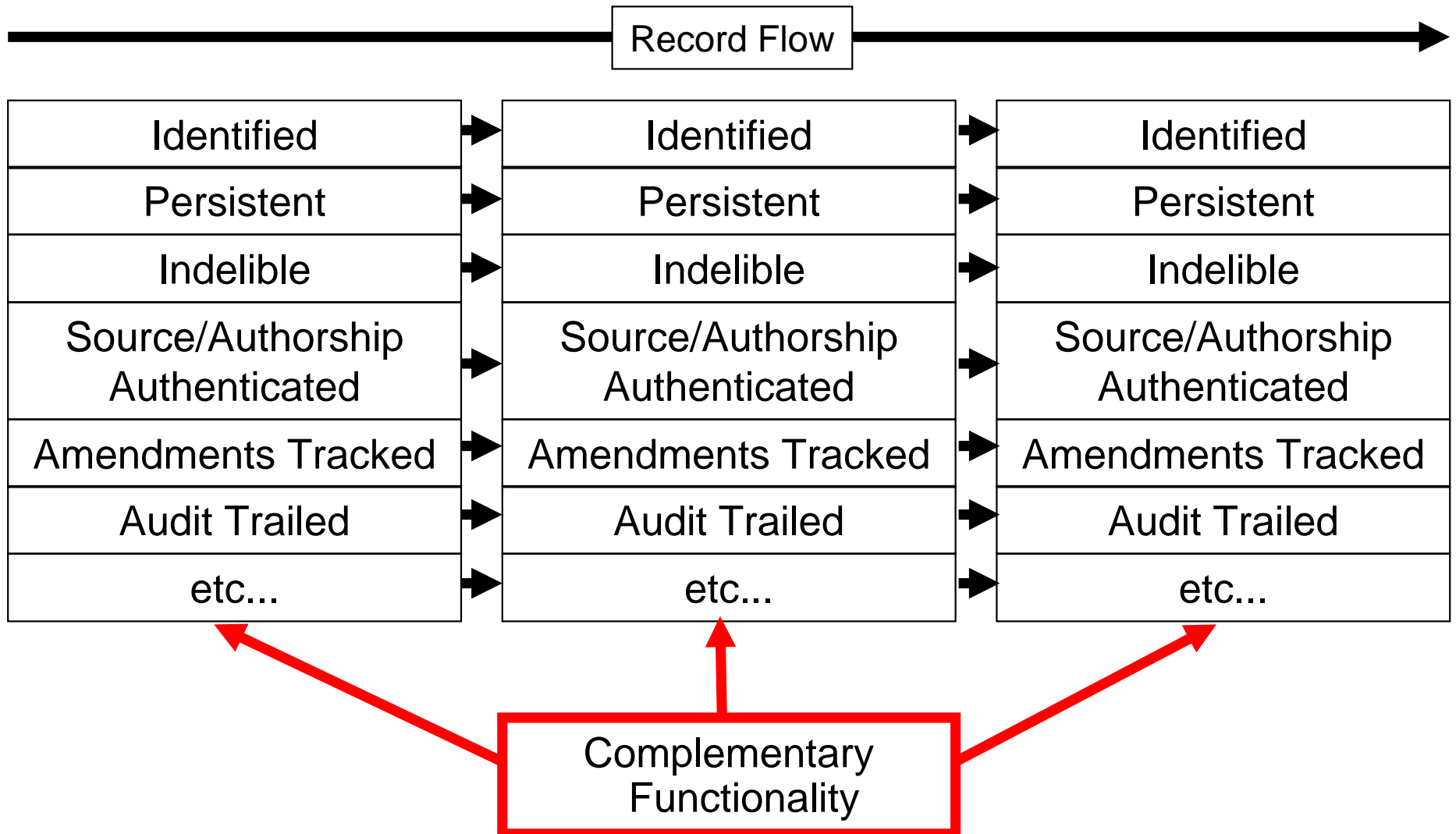
RECEIVING
EHRs/Application
Interoperability Function



SOURCE
EHRs/Application
Interoperability Function

NETWORK or
Intermediary
Interoperability Function

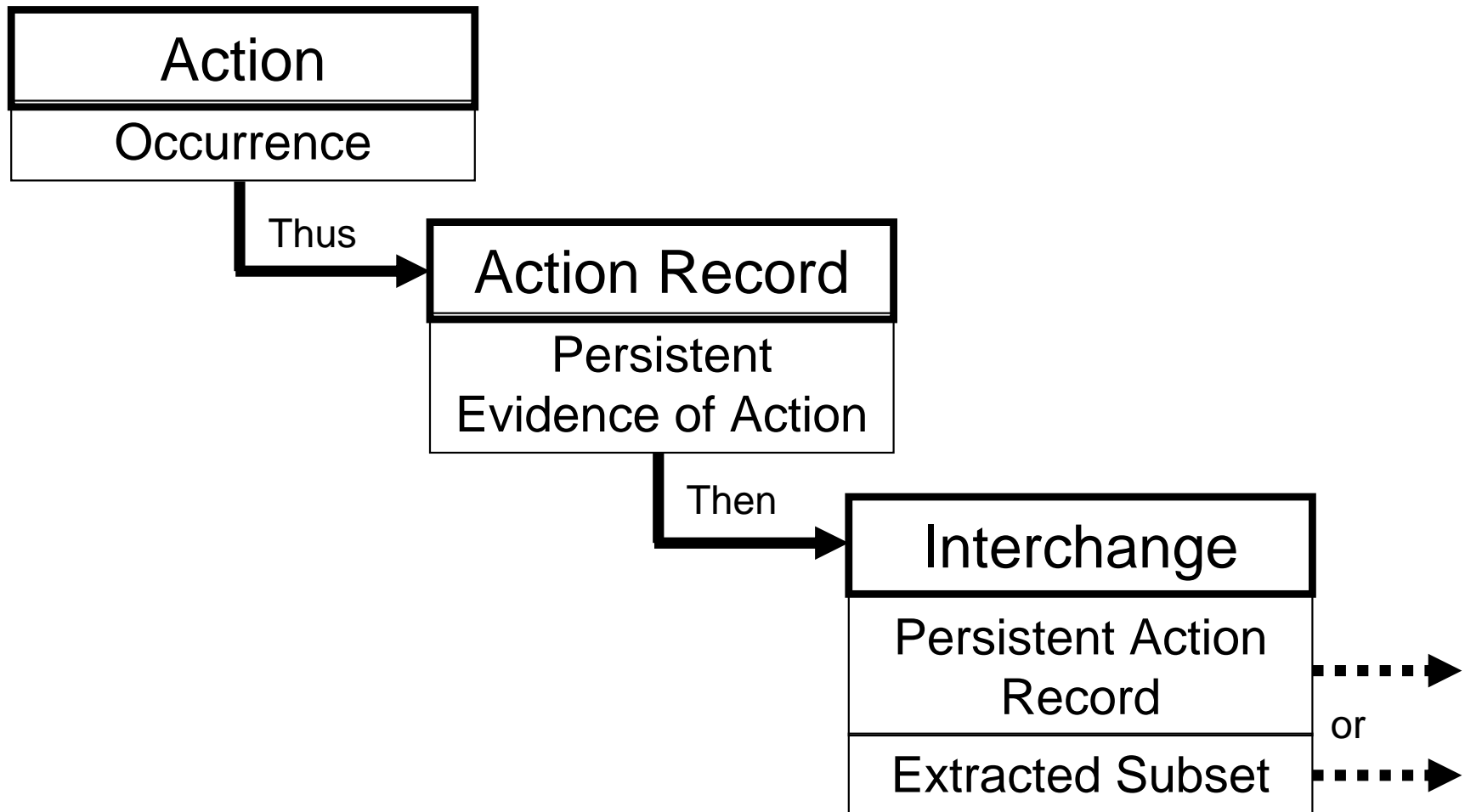
RECEIVING
EHRs/Application
Interoperability Function



Classes of NHIN Interchange

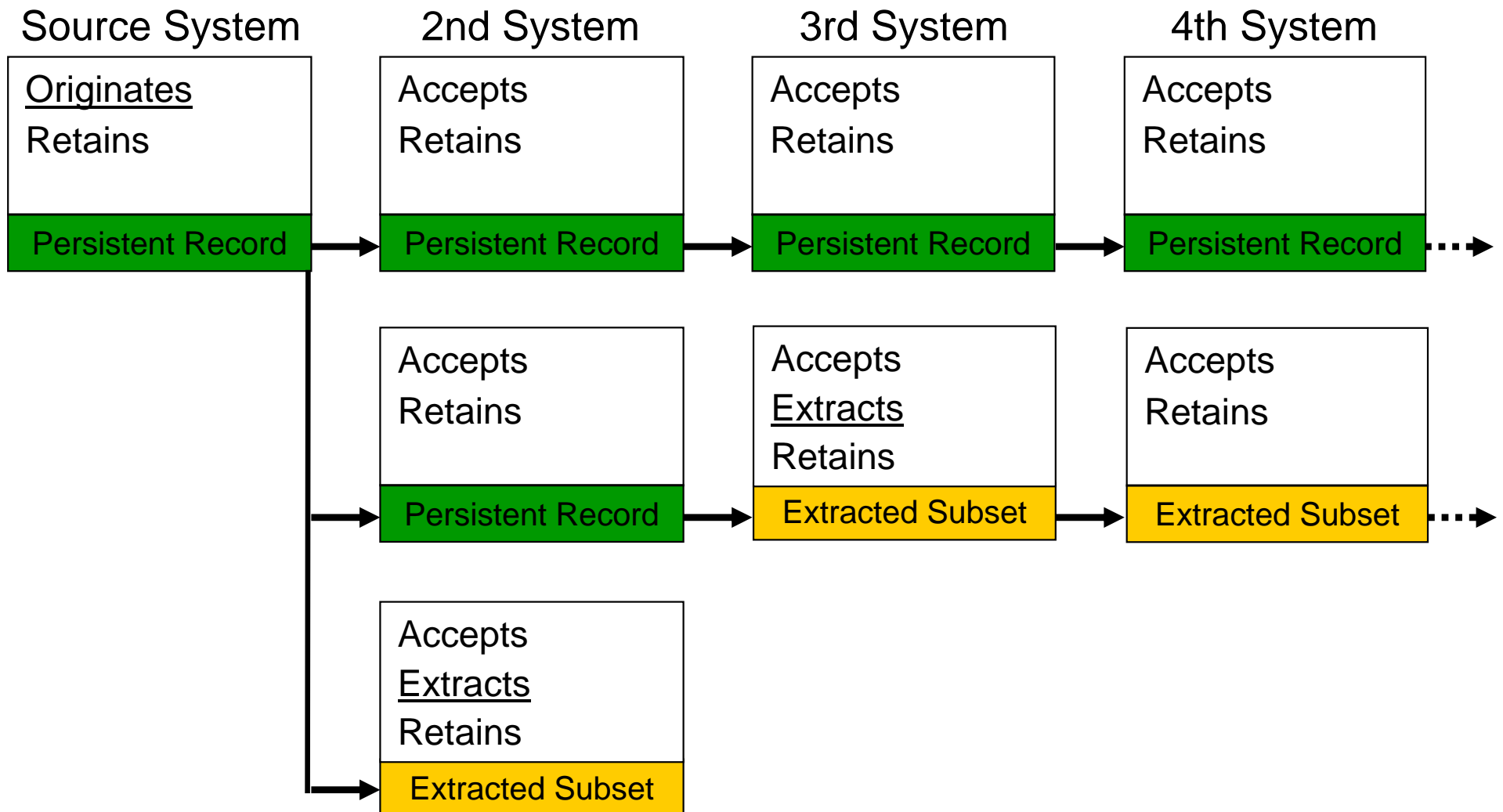
- Traceable to Persistent Source
 - Individual Health Record
 - Extracted Subset of Health Record
- Not Traceable to Persistent Source
 - Other Records and Data
- Transient Interchange Artifacts
 - e.g., Messages

Key Action Phases



Example Interchange Pattern

Persistent Records and Extracted Subsets



Contact

Gary Dickinson

Director, Healthcare Standards, CentriflyHealth

Chair, US Technical Advisory Group to ISO TC215

Head of US Delegation, ISO TC215

Lead, HL7 EHR Interoperability Project Team

Member, JCAHO HIT Advisory Panel

951-536-7010

gary.dickinson@centriflyhealth.com