



# **Clinical and Translational Science Award (CTSA)**

***Transforming Biomedical Research  
To Improve the Health of Our Nation's People***

**Dr. Jody Sachs  
NIH Roadmap Project Officer  
Division of Clinical Research  
National Center for Research Resources**

**sachsjpg@mail.nih.gov**

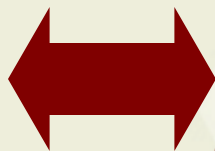


# Re-engineering Clinical Research

Interdisciplinary Research  
Innovator Award

Public-Private Partnerships

**Bench**



**Bedside**



**Practice**

Building Blocks and Pathways

- Molecular Libraries
- Bioinformatics
- Computational Biology
- Nanomedicine

Translational  
Research  
Initiatives

- Integrated Research Networks
- Clinical Research Informatics
- NIH Clinical Research Associates
- Clinical Outcomes

**Cross-cutting: Harmonization, Training**



# Challenges to Interdisciplinary Research

- **The current system of academic advancement favors the independent investigator**
- **Most institutions house scientists in discrete departments**
- **Interdisciplinary research teams take time to assemble and require unique resources**

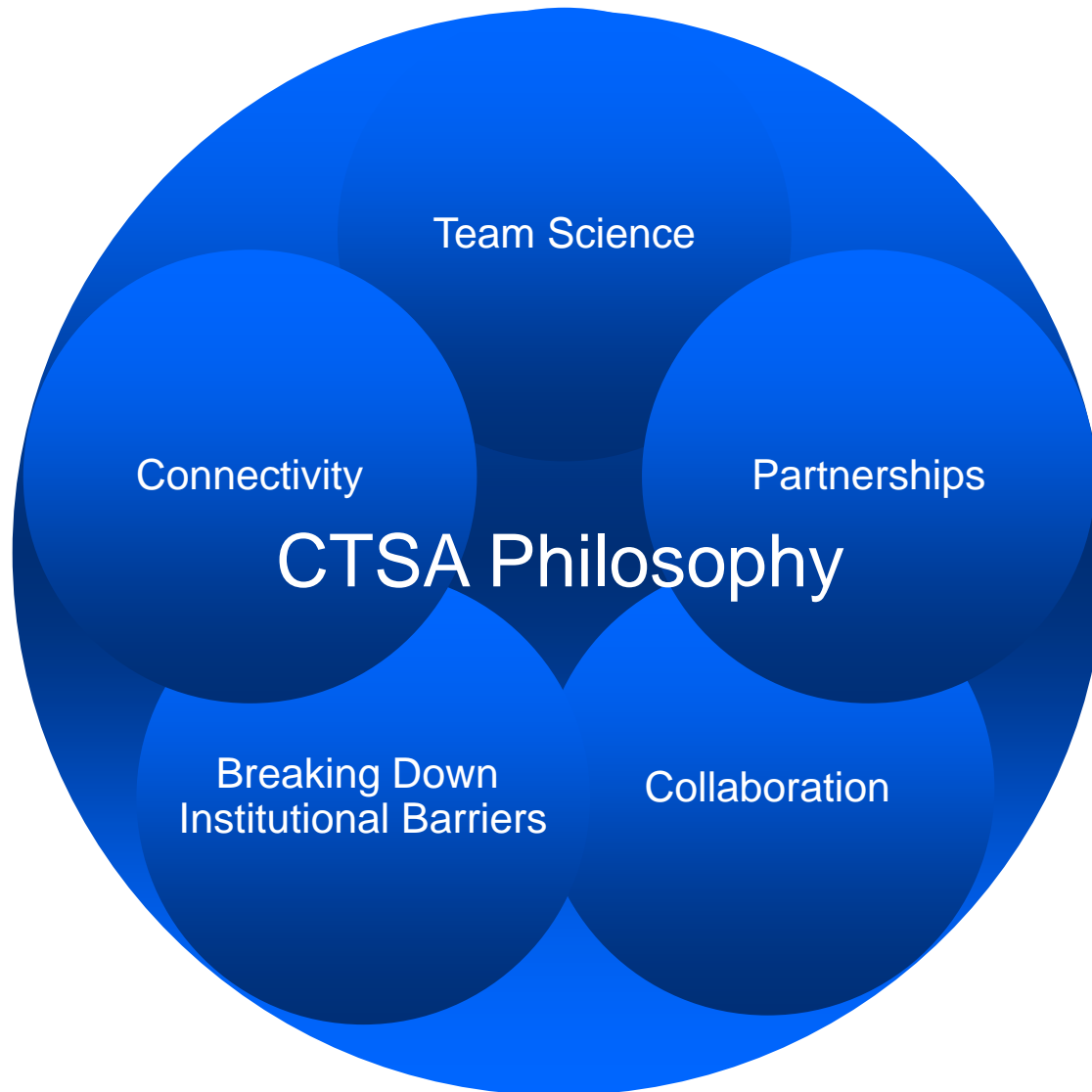




# Impetus for the CTSA Program



- **Catalyze change - break silos, break barriers, and break conventions**
- **Advance the new intellectual discipline of clinical and translational science**
- **Integrate resources and training**
- **Identify and remove impediments to clinical and translational science**





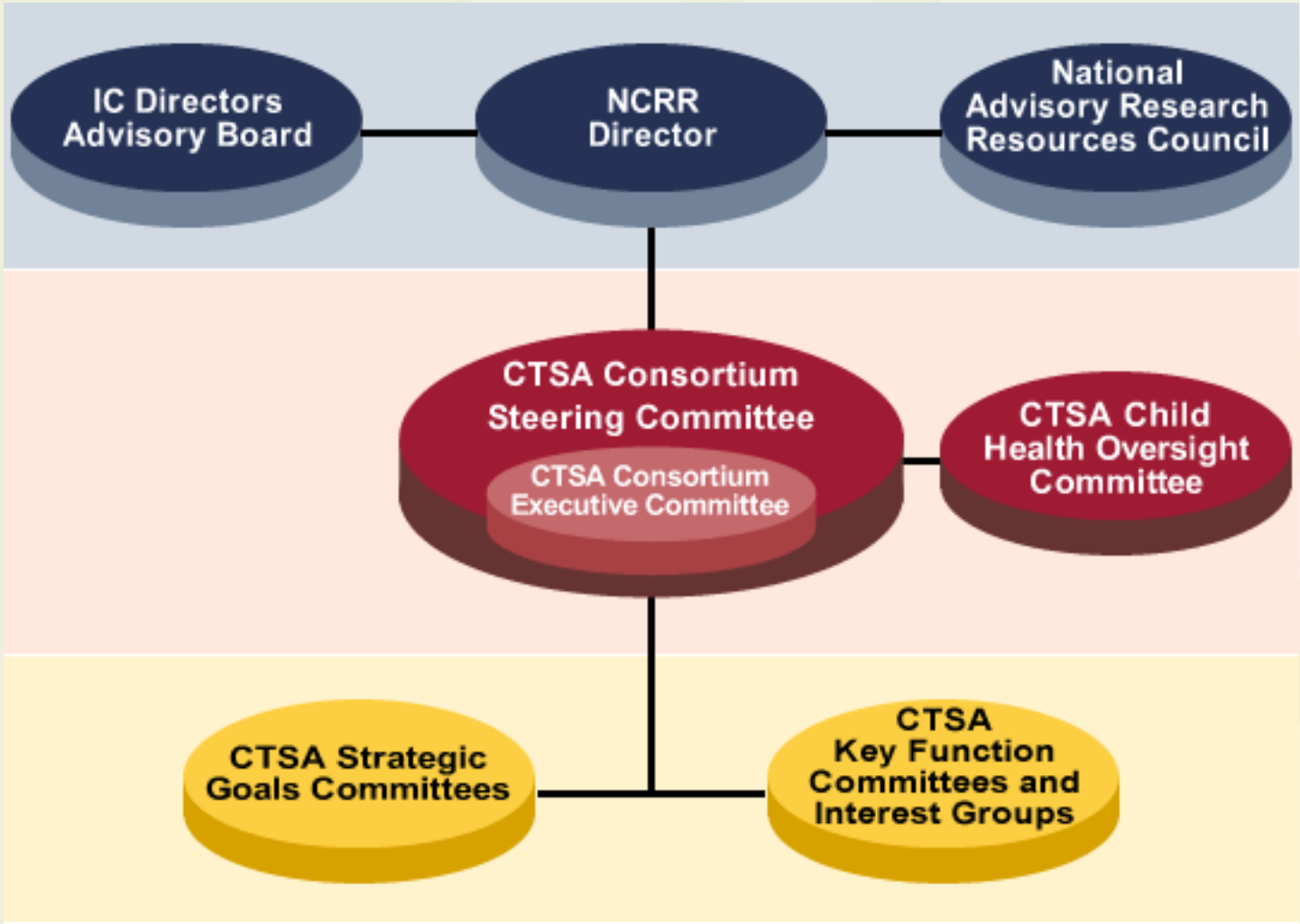
# Clinical and Translational Science Award (CTSA)

## Background:

- **Trans-NIH collaboration through the NIH Roadmap**
- **First RFA released October, 2005**
  - reviewed in summer of 2006 for October 2006 funding
- **Cooperative agreement mechanism**
  - Between awardee academic institution and NIH
  - Multi-faceted research program
  - Complex award mechanism: Combined U54, T32 and K12
  - 5 year award



# Governance for Cooperative Agreement





# Building a National CTSA Consortium

## FY06 Grantees

The Rockefeller University  
University of Texas Health Sciences  
Center at Houston  
University of California, Davis  
University of Pittsburgh  
University of California, San Francisco  
University of Rochester School of  
Medicine and Dentistry  
Duke University  
University of Pennsylvania  
Columbia University  
Mayo Clinic  
Oregon Health and Science University  
(partnering with Kaiser Permanente)  
Yale University

## FY07 Grantees

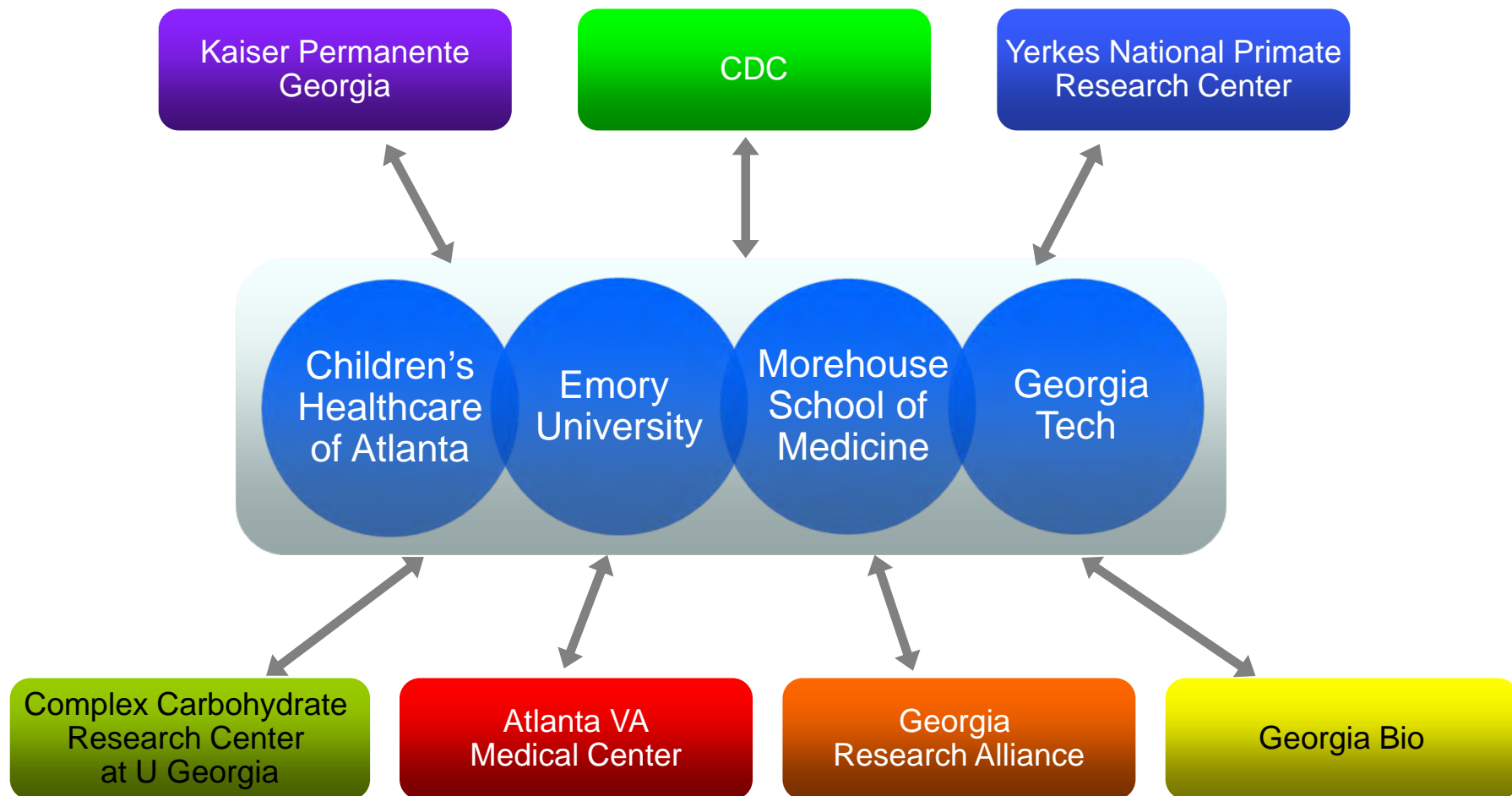
Emory University (partnering with  
Morehouse College)  
Case Western University  
Washington University  
Weill Cornell Medical College  
(partnering with Hunter College)  
University Of Wisconsin Madison  
Johns Hopkins  
University Of Washington  
University Of Michigan At Ann Arbor  
University of Texas Southwestern  
Medical Center – Dallas  
University Of Chicago  
University Of Iowa  
Vanderbilt University (partnering with  
Meharry Medical College)

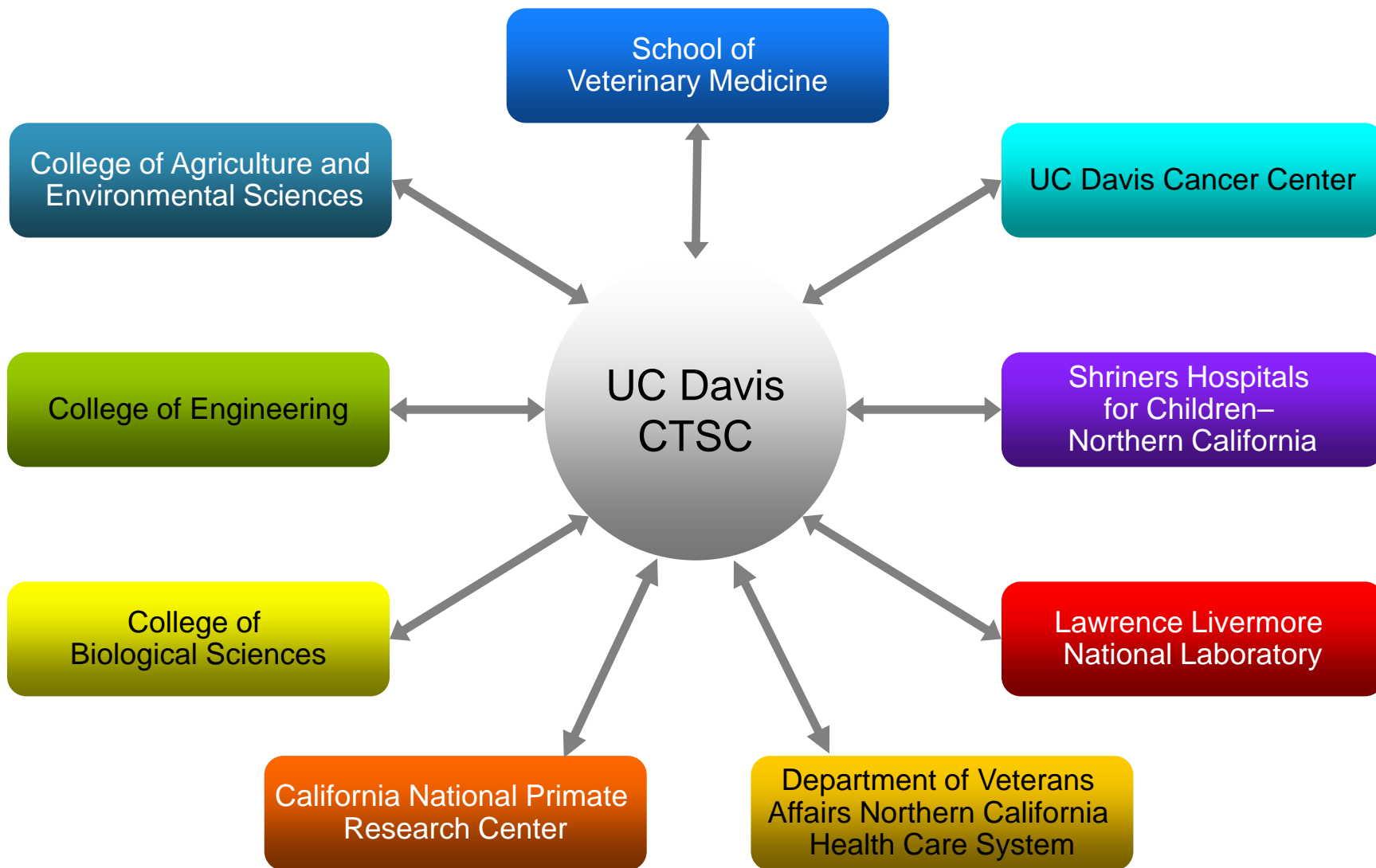
## FY08 Grantees

Albert Einstein College of Medicine  
Boston University Medical Campus  
Harvard University  
Indiana University-Purdue University at  
Indianapolis  
Northwestern University  
Ohio State University  
Scripps Research Institute  
Stanford University  
Tufts University Boston  
University of Alabama at Birmingham  
University of Colorado Denver/HSC  
Aurora  
University of North Carolina Chapel Hill  
University of Texas Health Science  
Center San Antonio  
University of Utah









**CTSA Committees & Activities**

- Consortium Committees
  - CTSA Consortium Steering Committee
  - CTSA Consortium Child Health Oversight Committee
- Key Function Committees
  - Administration
  - Biostatistics / Epidemiology / Research Design
  - Clinical Research Ethics
  - Clinical Research Management
  - Communications
  - Community Engagement
  - Education and Career Development
  - Evaluation
  - Informatics
  - Participant and Clinical Interactions Resources
  - Public-Private Partnerships
  - Regulatory Knowledge
  - Translational

**Clinical and Translational Science Awards**

A national consortium of medical research institutions, funded through Clinical and Translational Science Awards (CTSAs), is working together and shares a common vision to:

- Improve the way biomedical research is conducted across the country
- Reduce the time it takes for laboratory discoveries to become treatments for patients
- Engage communities in clinical research efforts
- Train the next generation of clinical and translational researchers

The CTSA initiative is led by the [National Center for Research Resources](#) at the [National Institutes of Health](#).

**This month's featured CTSA institution:** [The University of Chicago Institute for Translational Medicine](#).

- Select State -



**Quick Links**

- Resources for Researchers
- Building Connections
- Calendar
- e-Newsletter
- Communication Toolkit
- Governance Manual
- Institution Search
- CTSA Committee Representatives

**NIH CTSA Information**

- NCRR CTSA Information
- NEW CTSA CR Network Solicitation
- CTSA Booz Allen Solicitation
- Current RFA
- CTSA Funding Guidelines
- Questions and Answers
- Fact Sheet



# CTSA Committees and Groups

- **Institutional Activities**
- **National Activities**
- **Membership**
- **Meeting schedules and summaries**

<http://www.ctsaweb.org/>



# Find Clinical Research Networks

IECRN v1.0 - Windows Internet Explorer  
http://www.clinicalresearchnetworks.org/

File Edit View Favorites Tools Help

IECRN v1.0

Home/Search  
Add Your Network  
About Us  
Resources  
FAQs  
CRNFA Proposal Info  
Contact Us  
Evaluate Our Website

**Networks for Clinical Research**  
search • connect • interact

**connect**  
connect by collaborating or joining a Clinical Research Network

Back Print

**An Inventory of Clinical Research Networks**  
The purpose of the Networks for Clinical Research website is to provide a searchable Inventory and database of clinical research networks.

**Search Networks**  
FIND demographic and contact information for CLINICAL RESEARCH NETWORKS.

[Advanced Search](#)

Enter keywords, conditions, or network acronyms.

**Browse Networks**  
Search the Inventory to find a clinical research network listed by name, sorted alphabetically.

[A](#) [B](#) [C](#) [D](#) [E](#) [F](#) [G](#) [H](#) [I](#) [J](#) [K](#) [L](#) [M](#) [N](#) [O](#) [P](#) [Q](#) [R](#) [S](#) [T](#) [U](#) [V](#) [W](#) [X](#) [Y](#) [Z](#) [ALL](#)

# CTSA Community Engagement Committee

## Priorities

- Leverage partnerships for funding
- Interact with other CTSA programs
- Foster new research on the dissemination and implementation of relevant clinical & population-based research
- Establish a registry of community-generated research ideas and needs assessment







## **Clinical Research Network Feasibility Awards (CRNFA)**

### **CRNFA RFP-W08-001 due on Nov 13, 2008**

- **Funding was intended to support a new collaboration between a CTSA investigator and an ongoing Government funded clinical research network or clinical practice network.**
- **The funds are not intended to support the development of a new network.**
- **Proposal focus in 3 areas; Translational Science Dissemination Research, Cost-Benefit/Cost-Effectiveness Research, and Community Engagement Research.**



# CTSA Consortium Strategic Planning

Oct 6-7, 2008 Defined National CTSA Consortium Goals

## **Goal 1: *Enhancing National Clinical and Translational Research Capability***

- Clinical research management
- Expand Research infrastructure
- Phenotyping - human and preclinical models

## **Goal 2: *Enhancing the Training and Career Development of Clinical and Translational Scientists***



# CTSA Strategic Planning

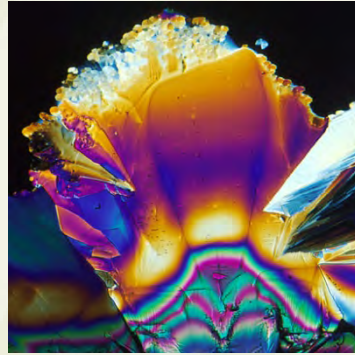
2008 Defined National CTSA Consortium Goals

## **Goal 3: *Enhancing Consortium-Wide Collaborations***

- National Resource Inventory
- Data Sharing Network
- Social Networking Initiative

## **Goal 4: *Enhancing the Health of Our Communities and the Nation***

- National Model for Community Engagement
- Inform Public Health Policy Through Research



# NIH *Transforming medicine and health through discovery*

