



Medicare Advantage and Part D Contract and Plan Enumeration

July 19, 2010

Lori Robinson

Director, Division of Plan Data

Medicare Drug Benefit and C & D Data Group

Center for Medicare

Centers for Medicare & Medicaid Services



Discussion Points

- Overview of current health and drug plan enumeration strategy used by the Medicare Advantage (MA) and Part D programs
- Utilization of the MA/Part D identifiers by CMS and industry
- Operational impact of adopting a new enumeration strategy for MA and Part D



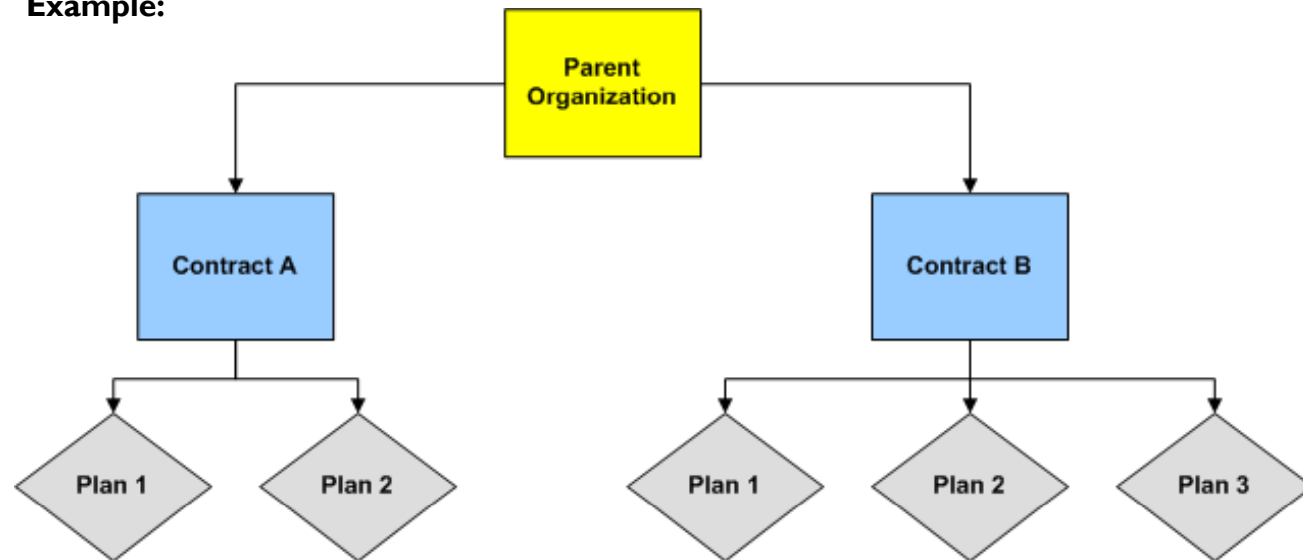
MA/Part D Definitions

- **Parent Organization**
 - A company that owns a controlling interest in one or more legal entities that have contracted with CMS to offer Medicare health benefits and/or prescription drug coverage.
- **Contracting Entity**
 - An organization licensed as a risk-bearing entity that has entered into an agreement with CMS to offer Medicare health benefits and/or prescription drug coverage.
- **Plan Benefit Package**
 - A set of Medicare health benefits and/or prescription drug coverage offered by an organization that has contracted with CMS.

Parent/Contract/Plan Relationships

- Each parent organization is affiliated with one or more contracts.
- Each contract is affiliated with one or more plans.

Example:





MA/Part D Enumeration Method

- MA/Part D enumeration performed by CMS' Health Plan Management System
 - Contract and parent organization numbers generated by the annual MA/Part D application process
 - Plan IDs generated by the annual plan bidding process
- Generally, CMS assigns a separate contract number to each legal entity/contract plan type
 - Legal entity A offering a local PPO
 - Legal entity A offering an HMO
 - Legal entity A offering a standalone PDP

MA/Part D Enumeration Scheme

Organization Type	Contract Enumeration	Plan Enumeration	Unique Plan Identifier
Local MA	HXXXXX <u>Ex:</u> H1234	XXX <u>Ex:</u> 001	HXXXXX XXX <u>Ex:</u> H1234 plan 001
Regional MA	RXXXXX <u>Ex:</u> R1234	XXX <u>Ex:</u> 001	RXXXXX XXX <u>Ex:</u> R1234 plan 001
Standalone PDP	SXXXXX <u>Ex:</u> S1234	XXX <u>Ex:</u> 001	SXXXXX XXX <u>Ex:</u> S1234 plan 001
Employer Direct	EXXXXX <u>Ex:</u> E1234	XXX <u>Ex:</u> 001	EXXXXX XXX <u>Ex:</u> E1234 plan 001

X represents a numeric digit.

Not shown: Parent organization code is three numeric digits.



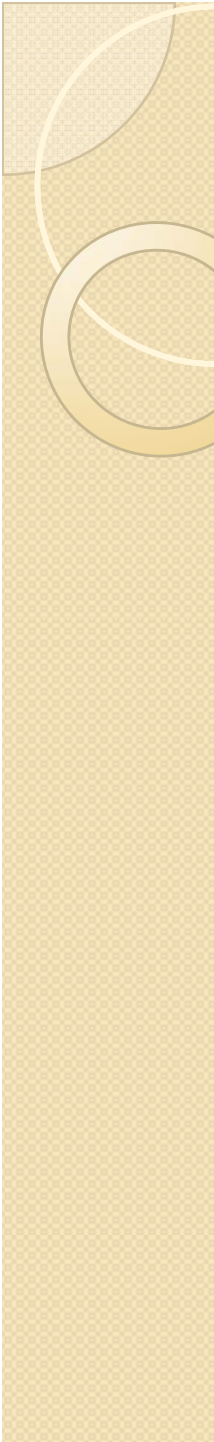
Notes on the MA/Part D Scheme

- Little intelligence in the identifier itself.
- Parent organization numbers and numeric digits of the contract number are randomly generated.
- Plan IDs are sequentially numbered (e.g., 001, 002, 003).
- Users access other variables stored in HPMS to understand parent/contract/plan characteristics (e.g., plan type, Part D offered, service area).



Utilization of MA/Part D Identifiers

- Current 2010 MA/Part D counts:
 - 289 parent organizations
 - 802 contracts
 - 6080 plan benefit packages
- 2009 enrollment and payment:
 - Approximately 29 million beneficiaries enrolled in MA and Part D plans
 - Payments to MA and Part D plans exceeded \$165 billion last year



Operational Considerations for the MA/Part D Programs

- Impact on CMS business operations that are designed using the existing schema

- Impact on CMS information systems, downstream external systems, and all operational data exchanges