

The Memphis Community Health Record Project

Ray King PhD, MSc

Epidemiologist/Health Scientist (Informatics), IHRC, Inc.

**Shelby County Health Department, Methodist Le Bonheur Healthcare,
Common Table Health Alliance, TN Department of Health, CDC**

The findings and conclusions in this presentation are those of the author & do not necessarily represent the views of the Centers for Disease Control & Prevention

National Center for Chronic Disease Prevention and Health Promotion
Division for Heart Disease and Stroke Prevention



What's Not Working?

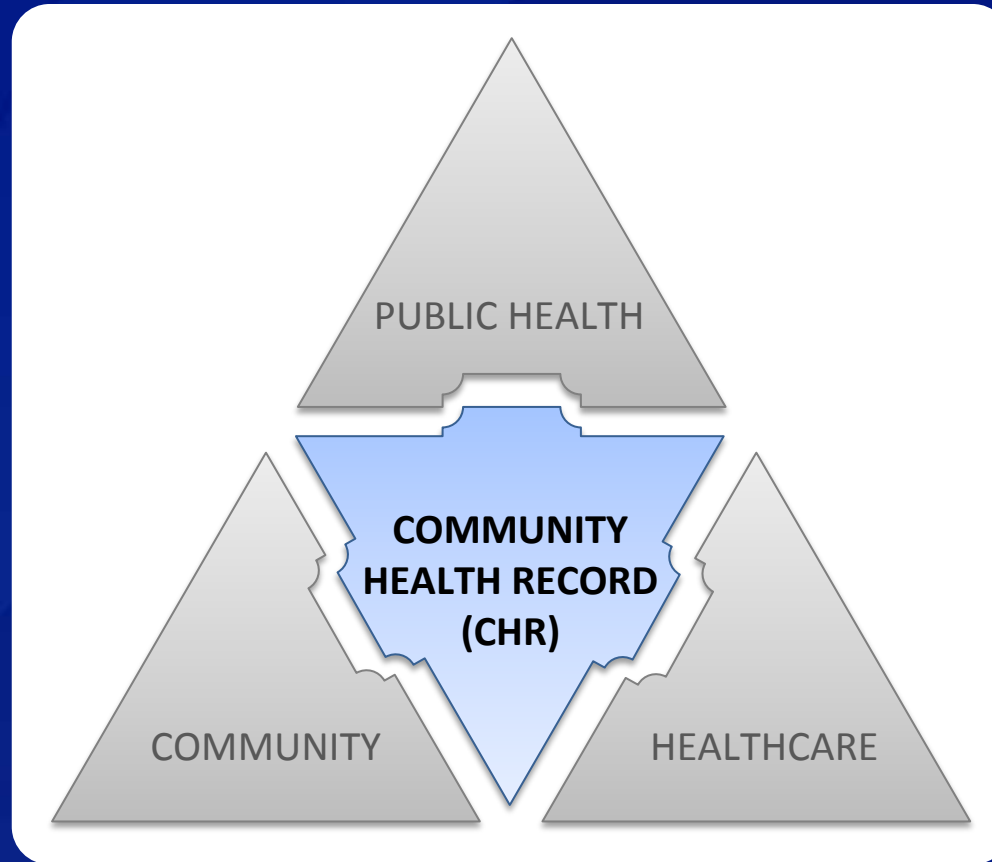
❑ Information Access

- Efficient Access
- Sub-County Data
- Transparent
- Reliable
- Timely

❑ Multisector Data & System Integration

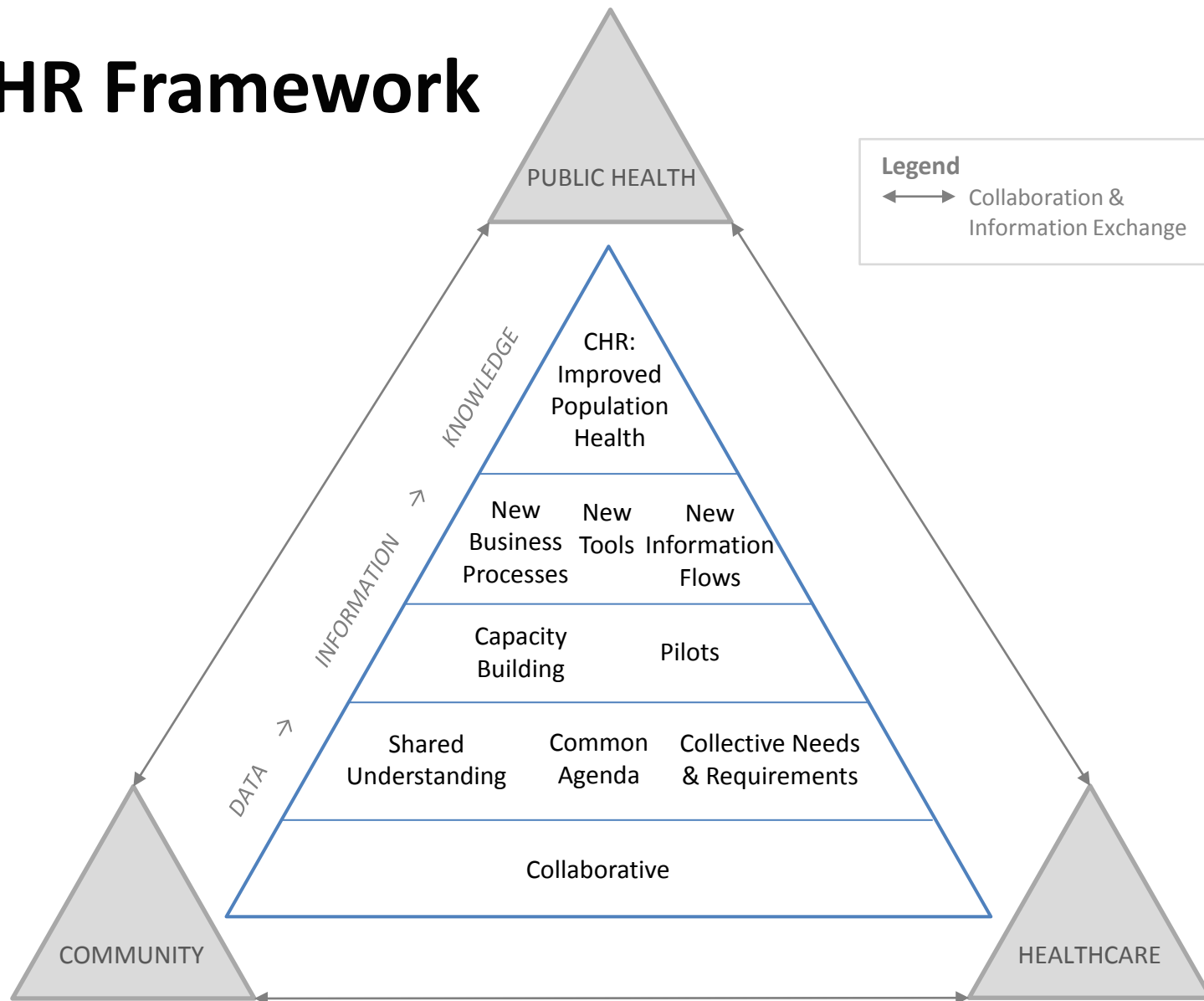
❑ Community Health Assessments & Surveys

What's Beginning to Work?

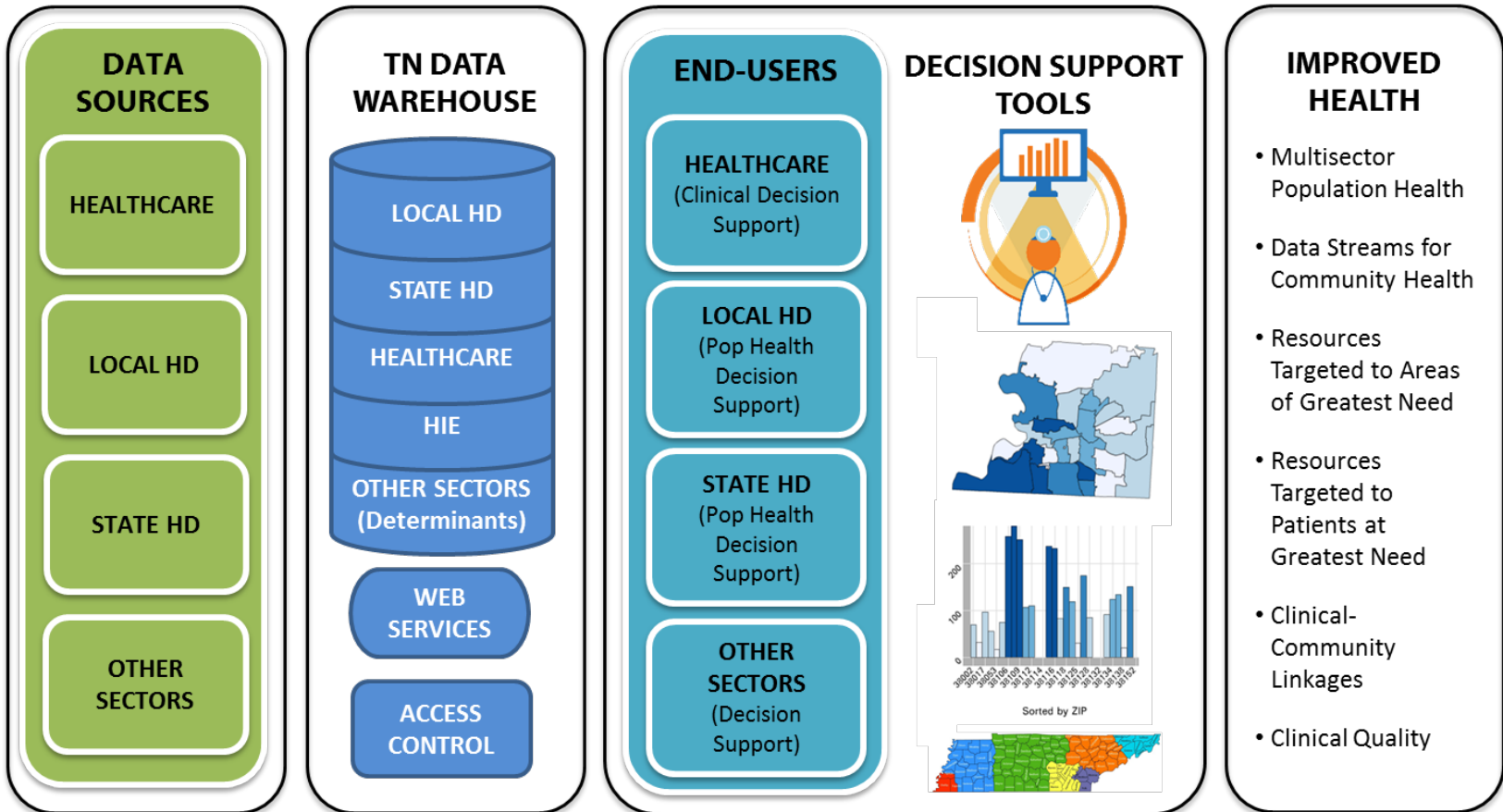


- 1) A **FRAMEWORK** to guide multisector collaboration & information exchange;
- 2) A **TOOL/SYSTEM** for integrating & transforming data into actionable information.

CHR Framework



CHR System



rjking@cdc.gov