

Community Health and Well-Being Across Trinity Health

Bechara Choucair, MD
November 2015



Trinity Health
Livonia, MI



Introduction to Trinity Health

Our 21-State Diversified Network

88 Hospitals* in 21 Regional Health Ministries** + 3 National Health Ministries + 5 Mission Health Ministries

51 Home Care & Hospice Locations Serving 116 Counties

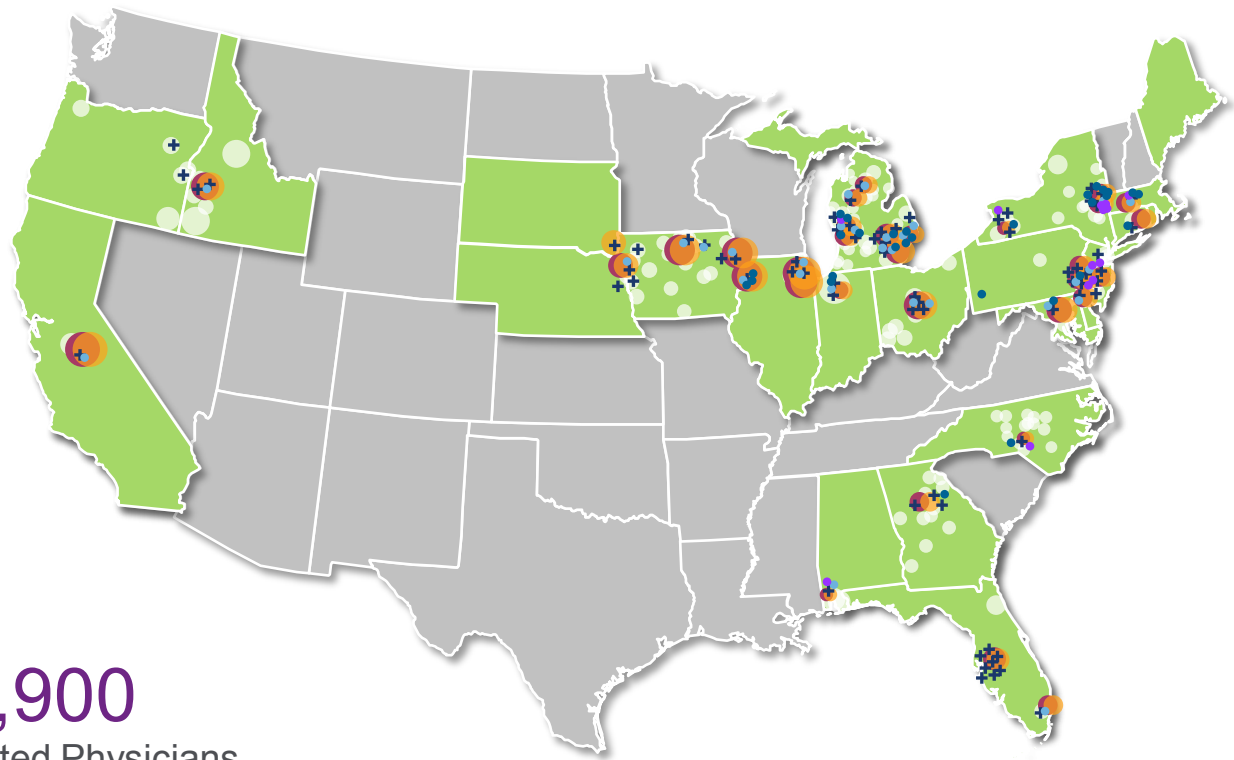
14 PACE Center Locations

61 Senior Living Facilities

3,900
Employed Physicians

23,900
Affiliated Physicians

1.5% of all babies in America are delivered at Trinity Health facilities



Note: Home Care & Physician coverage based on communities served.

* Owned, managed or in JOAs or JVs.

** Operations are organized into Regional Health Ministries ("RHMs"), each an operating division which maintains a governing body with managerial oversight subject to authorities.



Building a “People-Centered Health System” Together

People-Centered Health System

**Episodic Health Care
Management for
Individuals**

**Efficient & effective
episode delivery
initiatives**

**Population Health
Management**

**Efficient & effective care
management initiatives**

**Community Health
& Well-being**

**Serving those who are
poor, other populations,
and impacting the social
determinants of health**



Better Health • Better Care • Lower Costs

Transforming, Healing Presence in the Communities We Serve

Community Health & Well-being

Clinical Services:

Efficient & Effective Care
Delivery through Trinity's
Safety Net System

Community Engagement:

Efficient & Effective Wrap Around
Services Focusing on the Vulnerable & the
Poor

Community Transformation:

Community Building Focusing on
Built-Environment Economic
Revitalization, Housing, & other
Social Determinants of Health

Innovation in Care Delivery

Innovation in Technology

Innovation in Financing

Triple Aim

Better health ● Better care ● Lower costs

Transforming, Healing Presence in the Communities We Serve

Community Health & Well-being

Clinical Services:

Efficient & Effective Care Delivery through Trinity's Safety Net System

Community Engagement:

Efficient & Effective Wrap Around Services Focusing on the Vulnerable & the Poor

Community Transformation:

Community Building Focusing on Built-Environment Economic Revitalization, Housing, & other Social Determinants of Health

Innovation in Care Delivery

Innovation in Technology

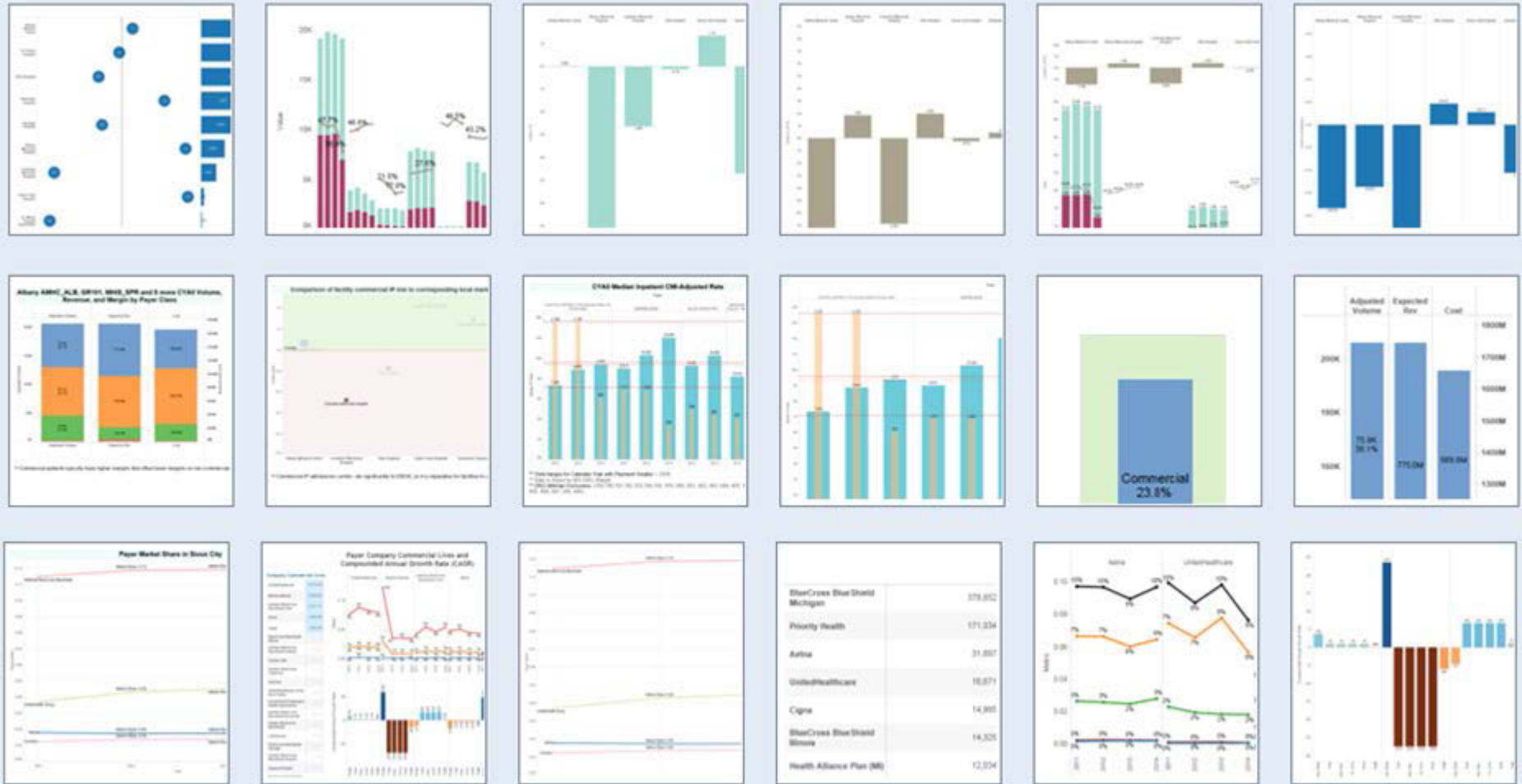
Innovation in Financing

Triple Aim

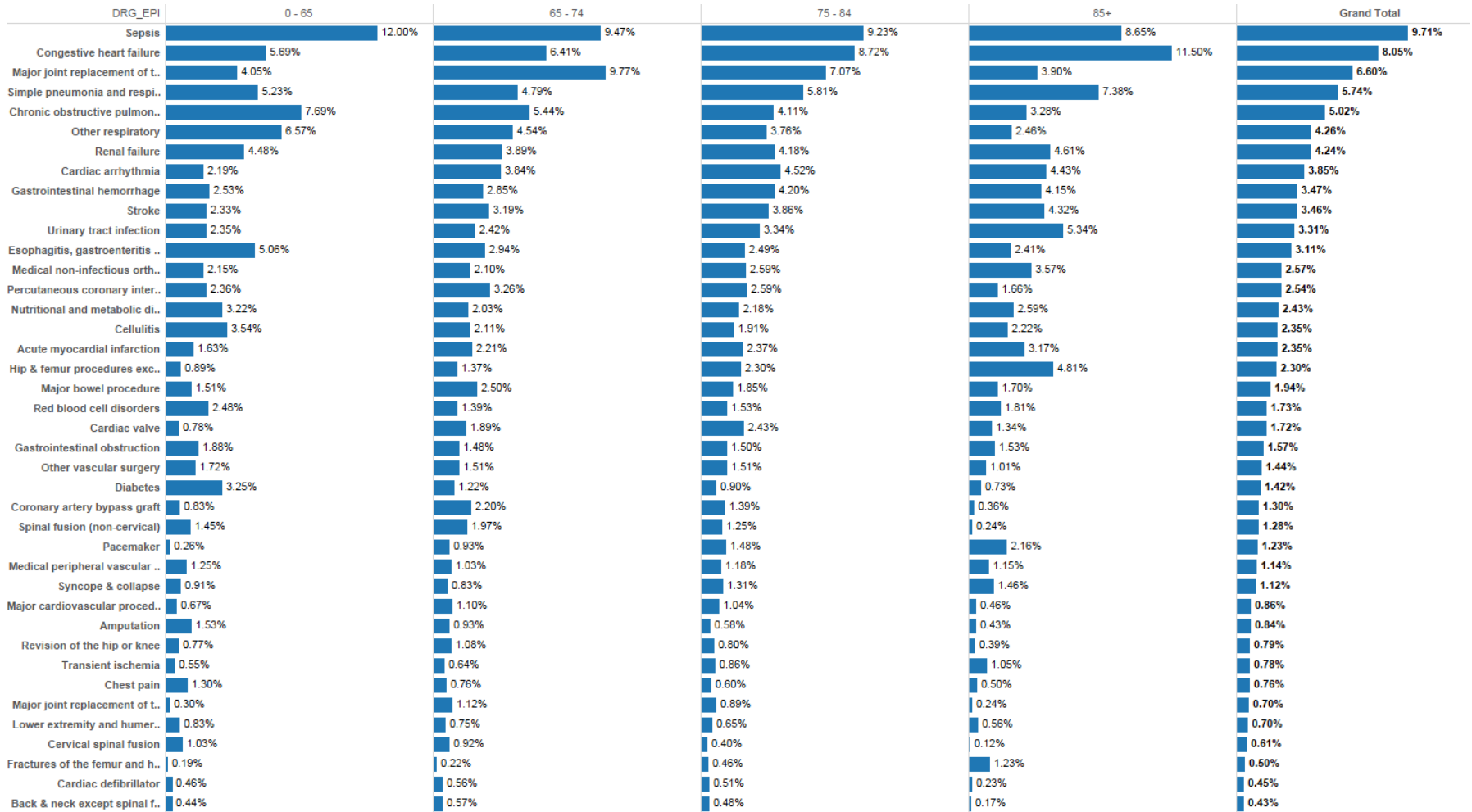
Better health • Better care • Lower costs

Pre-canned reports - analytics

More Complete / Accurate Analysis by: DRG, Diagnosis, Comorbidity, Age, Race, Zip Code, etc.



Additional Turn-Key Analytic Capabilities



Transforming, Healing Presence in the Communities We Serve

Community Health & Well-being

Clinical Services:

Efficient & Effective Care Delivery through Trinity's Safety Net System

Community Engagement:

Efficient & Effective Wrap Around Services Focusing on the Vulnerable & the Poor

Community Transformation:

Community Building Focusing on Built-Environment Economic Revitalization, Housing, & other Social Determinants of Health

Innovation in Care Delivery

Innovation in Technology

Innovation in Financing

Triple Aim

Better health • Better care • Lower costs

Community Engagement

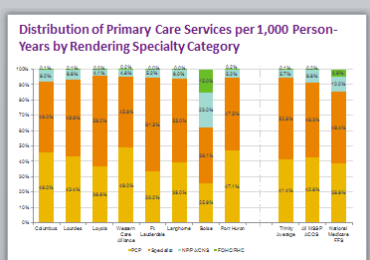
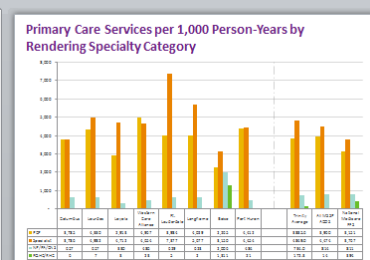
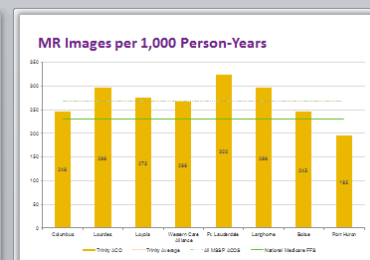
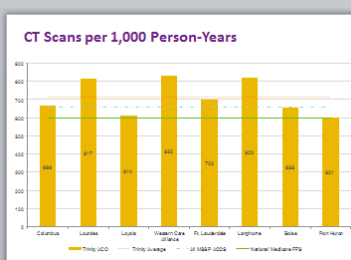
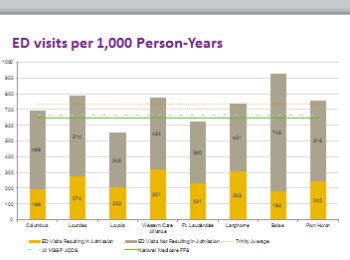
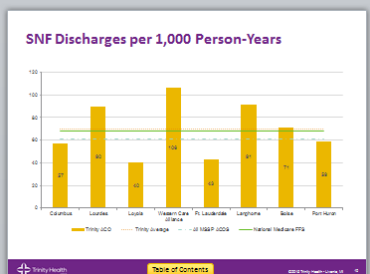
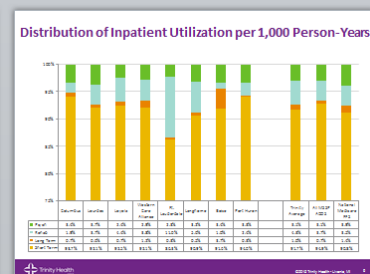
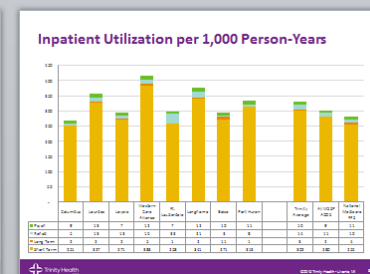
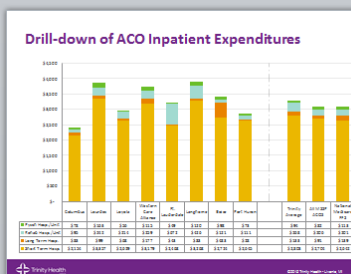
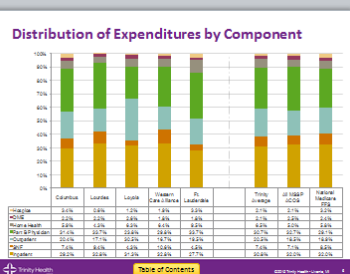
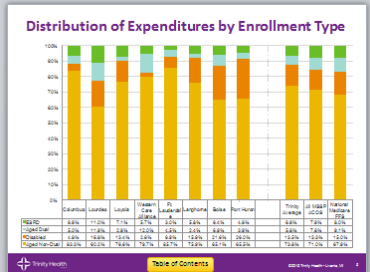
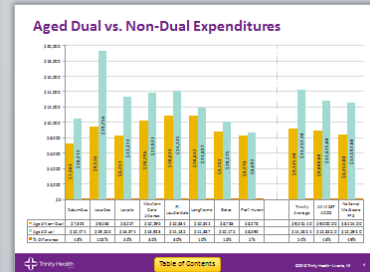
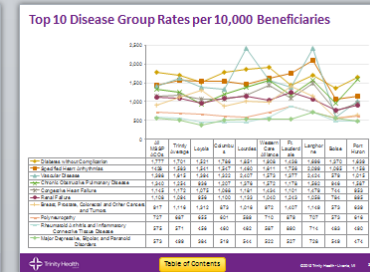
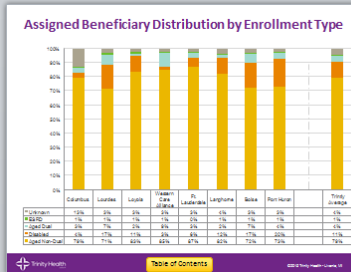
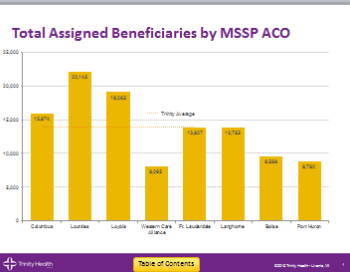
Deployment of 50 Community Health Workers (Valued at \$2.7 million per year)





Measuring Impact

Existing MSSP ACO metrics / dashboards will be used to evaluate the impact of deploying up to 10 CHW at each of the 6 targeted ACOs.



Transforming, Healing Presence in the Communities We Serve

Community Health & Well-being

Clinical Services:

Efficient & Effective Care Delivery through Trinity's Safety Net System

Community Engagement:

Efficient & Effective Wrap Around Services Focusing on the Vulnerable & the Poor

Community Transformation:

Community Building Focusing on Built-Environment Economic Revitalization, Housing, & other Social Determinants of Health

Innovation in Care Delivery

Innovation in Technology

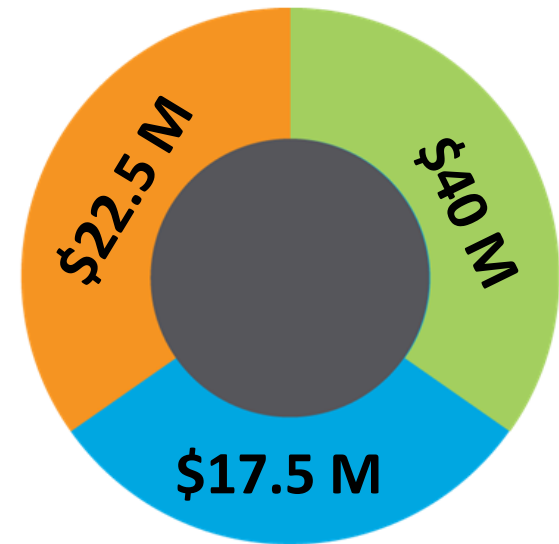
Innovation in Financing

Triple Aim

Better health ● Better care ● Lower costs

Transforming Communities Funding Opportunity

- ✦ Launch in November 2015.
- ✦ Anticipated investment of \$80 million over 5 years in community health interventions.
- ✦ Funding local partners / RHMs. Several national partners at the table.



- Trinity Health Contribution
- Trinity Health Investment Fund*
- Community Contribution

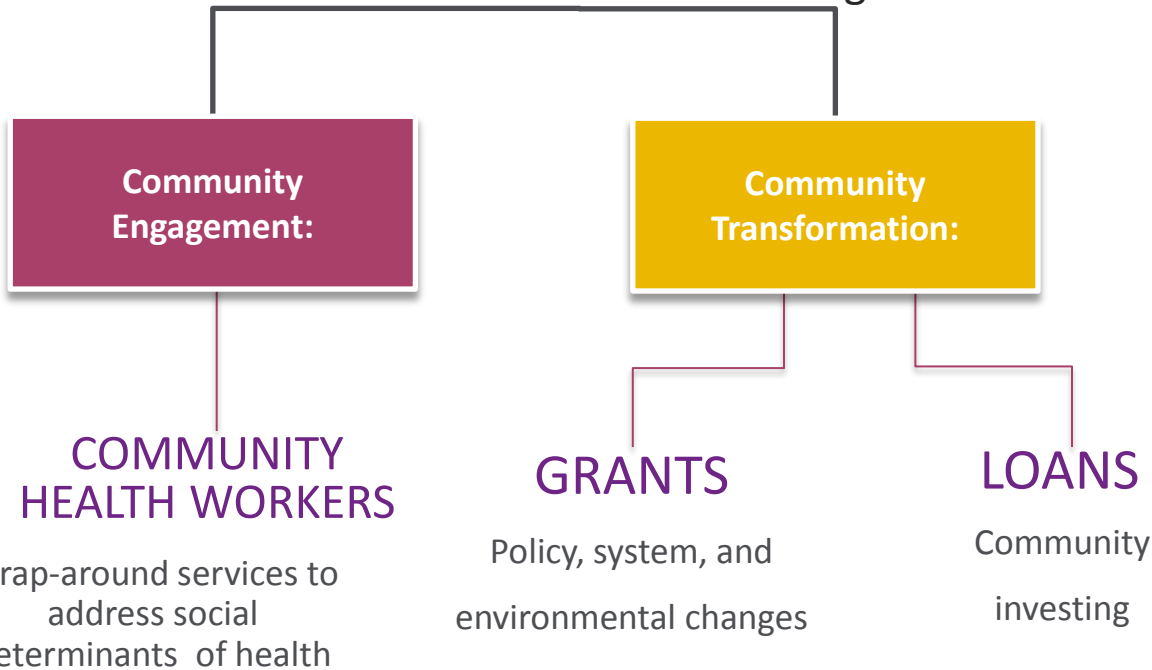


Transforming Communities Funding Opportunity



Invest & Support

Financial and Human Resources Through 2020



Measuring Impact



- Measuring Impact:
Substantial investment in documenting outcomes.

Comprehensive Technical Assistance w/ National Partners at the Table



Community Health & Well-Being Dashboard

- In progress
- Domains Identified:
 - Outcomes
 - Health Behaviors
 - Social Determinants of Health
 - Income
 - Education
 - Built Environment
 - Public Safety
 - Civic Engagement
 - Clinical Care

Discussion...



Trinity Health
Livonia, MI

