

NATIONAL HEALTH INTERVIEW SURVEY

Major Activities

Marcie Cynamon, *Director*

Division of Health Interview Statistics

National Committee on Vital and Health Statistics

June 14, 2016

Outline

- **Major Activities**
 - Data dissemination
 - Questionnaire content redesign
- **Near future changes**
 - Overview of structure and content
- **Impact of change**
- **Stakeholder engagement**



Background: National Health Interview Survey

- ***Purpose:*** Since 1957, monitoring the health of the US population through the collection, analysis, & dissemination of data on a broad range of health topics
- ***Sample:*** Address-based, multi-stage, clustered national sample of housing units from every state, representative of the civilian noninstitutionalized US population
- ***Mode:*** In-person interviews by Census interviewers
- ***Data collection:*** Continuous, with quarterly and annual data files
- ***Target sample size:*** Complete interviews for 35,000+ households

National Health Interview Survey Data Dissemination – Early Release

- Quarterly data files
 - Within 6 months of data collection completion
- Early release program
 - 15 key health indicators (i.e., usual source of care, diabetes, asthma, physical activity, cigarette smoking)
 - Health insurance coverage
- New for the 2015 NHIS: accelerated release dates by 4 weeks on average.

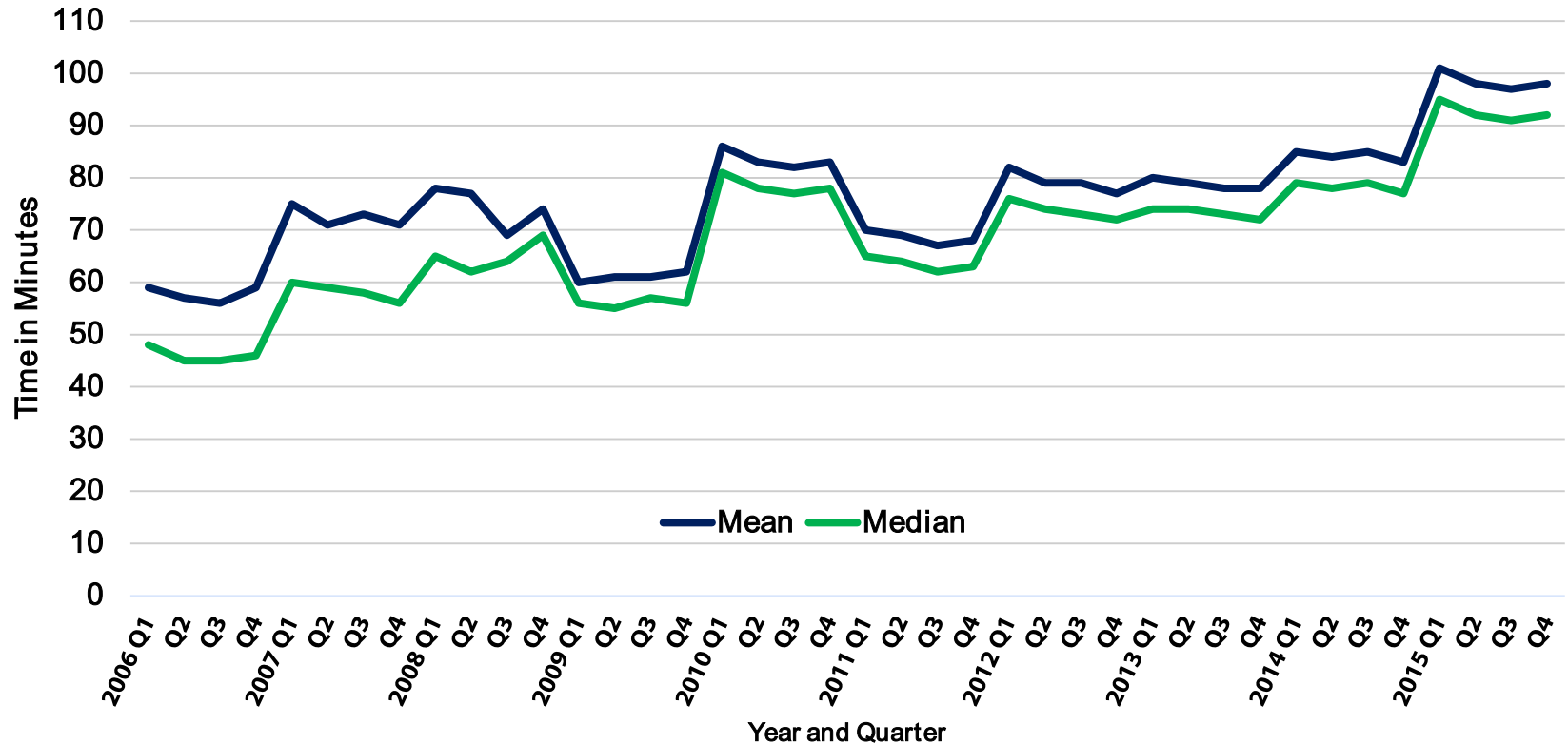
National Health Interview Survey Data Dissemination

- **Reports, presentations, files, webinars**
 - **NCHS Publications**
 - **Health E-Stat**
 - **Data Briefs**
 - **National Health Statistics Reports**
 - **Online Tables**
 - **MMWR**
 - **Articles**
 - **QuickStats**
 - **Surveillance Summaries**
 - **Vital Signs**
 - **Journal Articles**

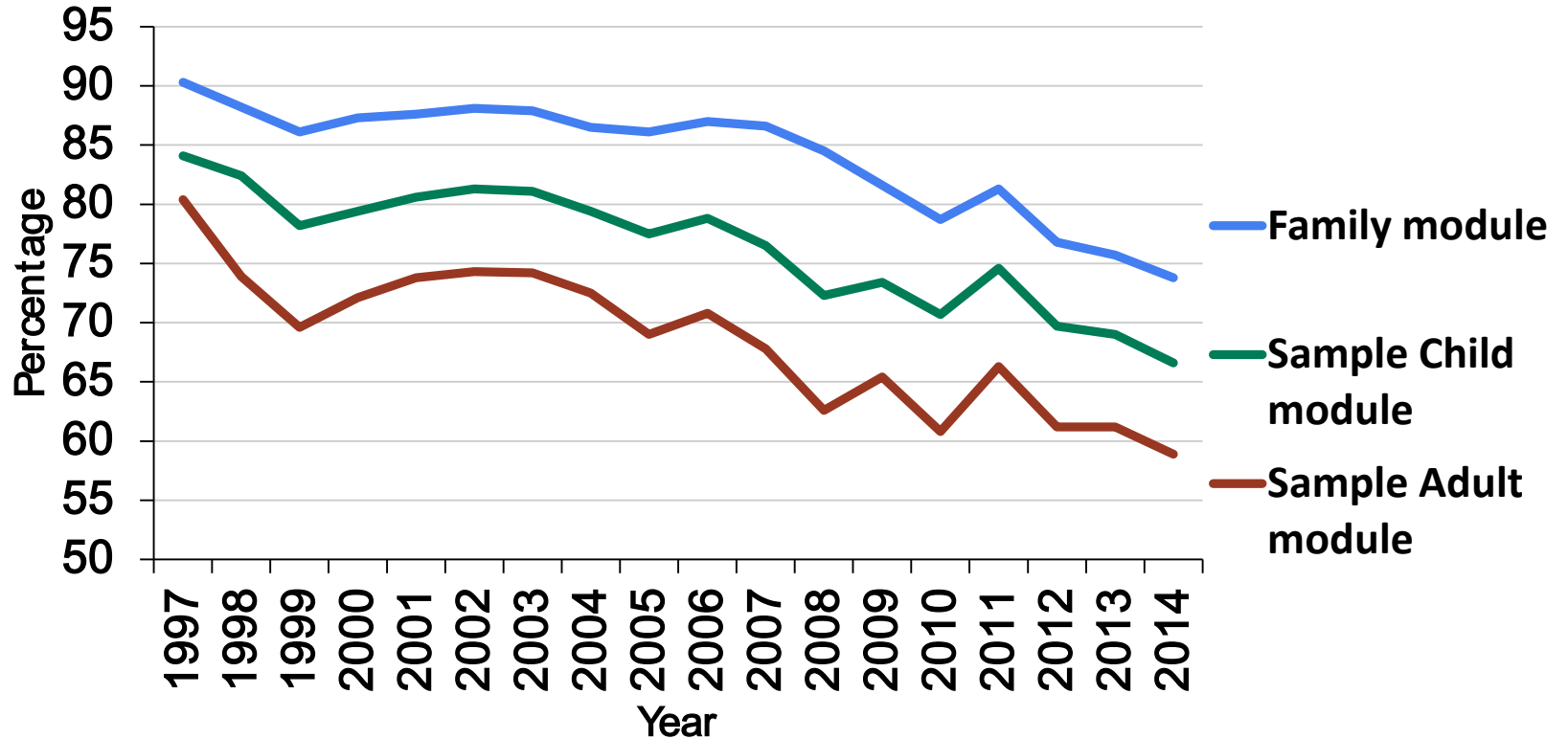
Goals of the 2018 Content Redesign

- **Improve the relevance of covered health topics, better meeting the needs of DHHS and other data users**
- **Focus on leading causes of morbidity/mortality, their known risk and protective factors, and targets of health promotion initiatives; access**
- **Harmonize overlapping content with other federal health surveys**
- **Reduce respondent burden and improve data quality**
 - **Shorten questionnaire and reduce variation in interview times**
 - **Eliminate or reduce content better covered by other methods**
 - **Establish a long-term structure of periodic topics**

Length of Completed Interviews (in minutes), by Quarter: NHIS, 2006-2015

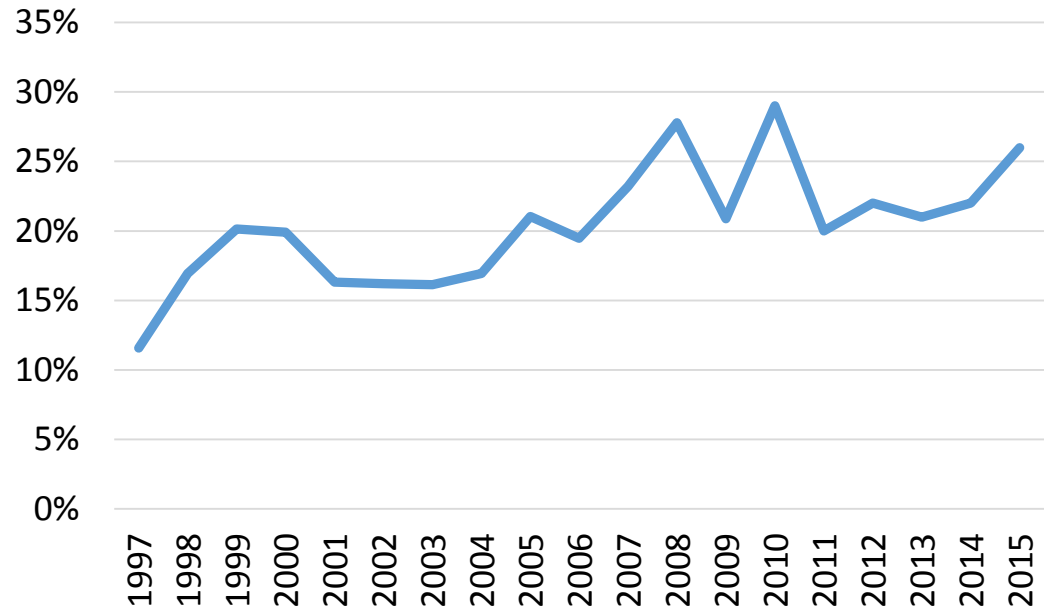


NHIS Family, Child, and Adult Response Rates, NHIS 1997-2014



Breakoffs: Proportion of Cases on the Data Files with Incomplete Data, NHIS 1997-2015

- The proportion of partial interviews almost tripled between 1997 and 2010.



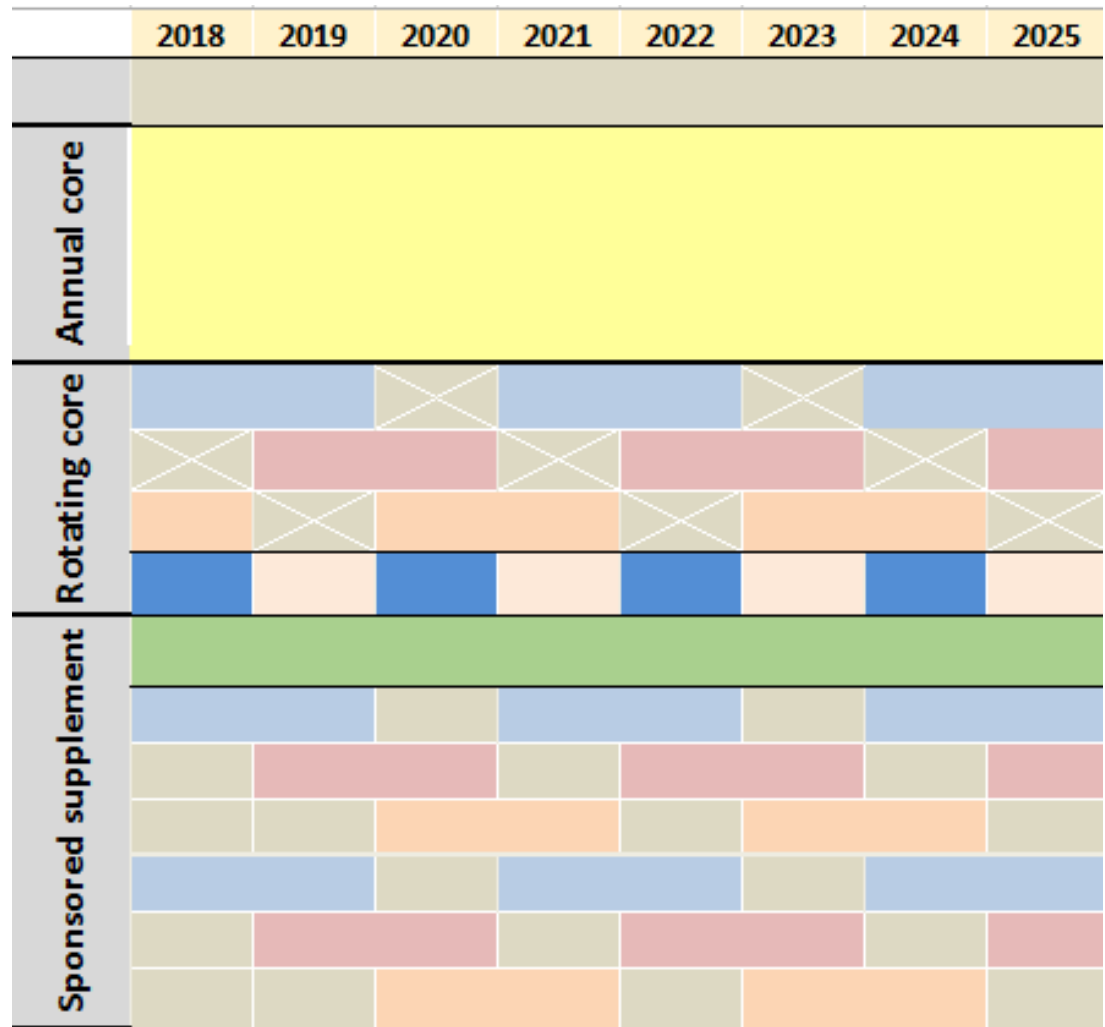
Key Content Areas for the NHIS

- **Functioning and disability**
- **Health status and conditions**
- **Health insurance coverage**
- **Health care access and utilization**
- **Health risk behaviors**
- **Demographics**
- **Social and economic determinants**



The Quilt

- Annual core
 - Key measures
 - Demographics
- Rotating core
 - Newer topic areas
 - Expanded detail
 - Varying periodicity
- Sponsored supplements
 - “Sustaining” sponsors
 - 1- or 2-year modules
 - 5 min or less




2018 NHIS Structure: Proposed Core Modules

Sample Adult Core

- **Self-response** (unless unable)
- **Relevant family-level data**
- **Fielded with fixed periodicity**

Sample Child Core

- **Knowledgeable adult responds for child**
- **Relevant family-level data**
- **Fielded with fixed periodicity**



**Demographics,
some family
relationships, and
family income;
Health insurance,
utilization,
conditions, and
behaviors**

Impact of changes

- Shorter interviews, improved data quality
- Updated focus
- Possible break in trends
- Less family context information
- Increased person-level information
- Less information on rare events/conditions
- Consistency in long term planning

Input to guide decision making

- **Evaluating Uses of NHIS Data**
 - Literature review
 - Reporting requirements
- **Policy and program relevant data DHHS**
- **Engaging stakeholders**
 - Meetings with users
 - Public solicitation of input: Oct. 2015, Feb. 2016, June 2016
 - Federal register: Fall 2016, twice in 2017
- **Technical expert consultation**

For More Information

http://www.cdc.gov/nchs/nhis/2018_quest_redesign.htm