

What Public Health Practice says about Data Gaps for Advancing Rural Health Equity

National Committee on Vital & Health Statistics

January 25, 2022

Betty Bekemeier, PhD, MPH, RN, FAAN

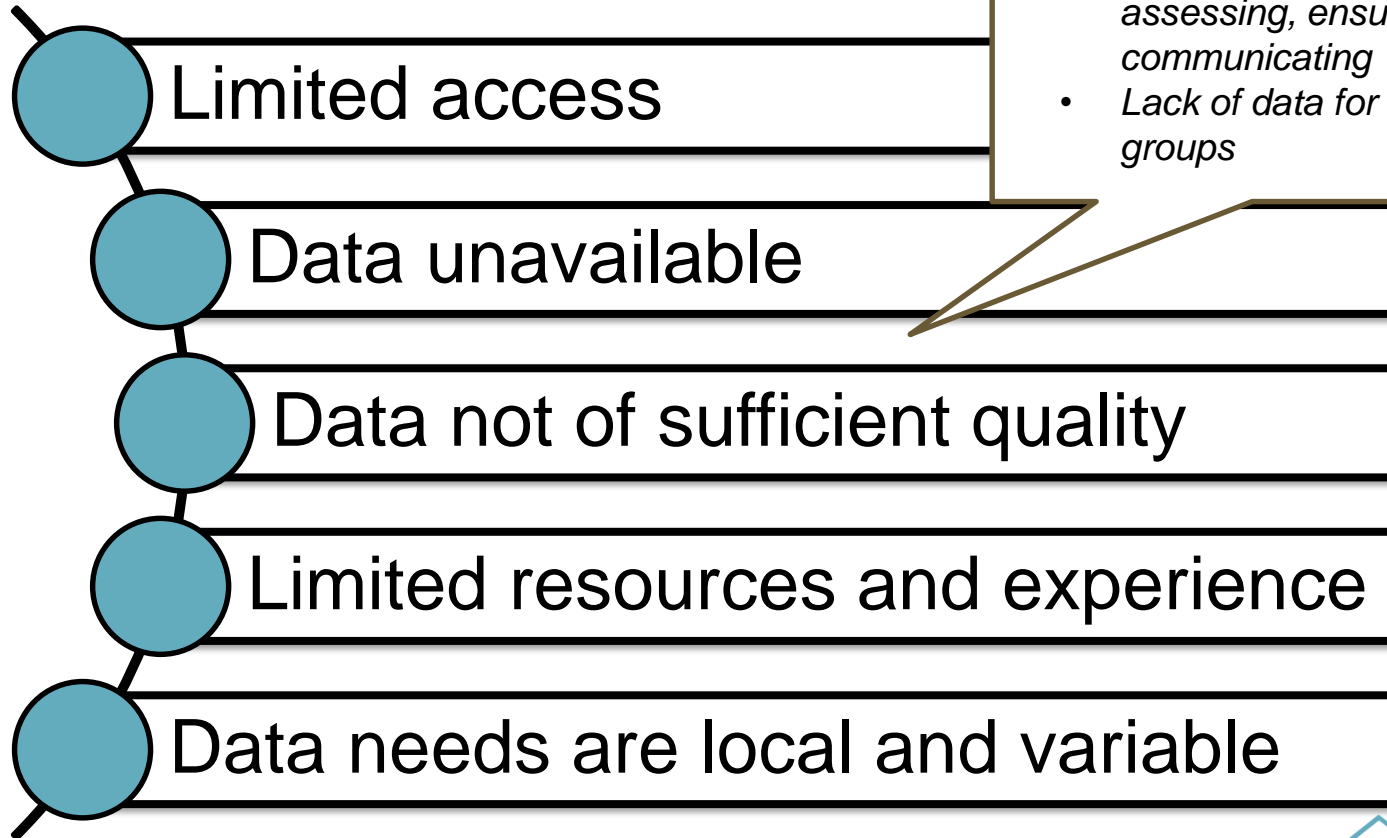
Professor, UW School of Nursing

Director Northwest Center for PH Practice, UW School of Public Health

bettybek@uw.edu



Rural *Public Health* Data Gaps



COVID-19 Interviews with rural PH leaders

- *Overwhelmed by data volume & flashy dashboards*
- *Data trustworthiness*
- *Lack of capacity for assessing, ensuring quality, communicating*
- *Lack of data for underserved groups*

(Bekemeier, B., Park, S, Backonja, U, Ornelas, I, Turner, A., & 2019)



Public Health *Administrative* Data

2800 
local health departments in all 50 states





measure their activities & services differently









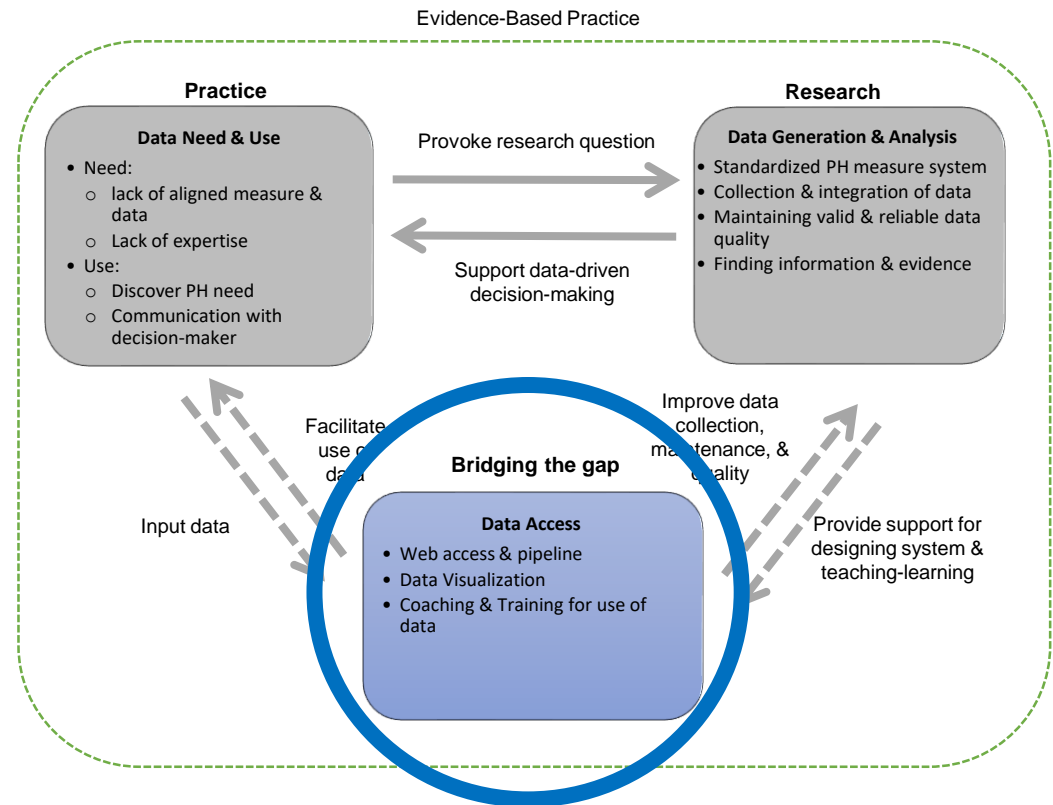
but need standardized, comparable data for



E.g. No means of estimating type and amount of workforce needed to address PH crises

Bridging the Gap: Data Access

- Reduce the gap between practice & research
- Develop supports:
 - Online data capture tools,
 - Linking datasets
 - User-centered data dashboard,
 - Training to facilitate data use



(Bekemeier & Park, 2018)

Data Gaps in Addressing Equity

Modifiable SHARE-NW Solutions to Help Address Gaps

Limited Access

- Link **datasets**
- Create **dashboard** with multiple data sources
 - Include **visualization** and easy-to-populate **infographics** for communicating

Data Unavailable

- **Training** to **collect** data, **use** available data creatively

Data Quality

- **Incentivize** better data collection through data use
- **Training**
 - To evaluate data for its **utility**
 - To evaluate when data are “**good enough**”
 - About **alternative** sources of data

Limited Capacity for Data Use

- **Training**
 - To lead community **conversations** about data
 - How to navigate and use a data **dashboard**

Heterogeneity of Rural Jurisdictions

- **Training**
 - To **compare** data with peers
 - To collect/identify **alternative** sources of data

Address & Identify Health Inequities

- **Training** to use an **equity lens** in decision-making



Addressing Rural *Public Health* Data Gaps

SHARE-NW
Data for Rural Health Equity

Solutions in Health Analytics for Rural Equity across the Northwest

See where rural health disparities exist in your community by exploring the data dashboards, and better understand how you can make data-driven decisions to reduce those disparities with training support.

Data Dashboards

Access data by the topics listed below. Within each dashboard you can select a subtopic and filter by state and/or local jurisdiction.

- Demographics**
Subtopics: Personal Characteristics, Education, Work and Income, Housing, Renting and Evictions, Homelessness, Health Insurance
- Obesity and Physical Activity**
Subtopics: Obesity, Physical Activity, Food Access, Food Insecurity, Food Assistance
- Injury and Violence Prevention**
Subtopics: Unintentional Injury, Firearms, Intimate Partner and Domestic Violence, Adverse Childhood Experiences
- Oral Health**
Subtopics: Prevention, Access to Care, Health Outcomes
- Mental and Behavioral Health**
Subtopics: Mental Health, Drug Use, Alcohol Use, Suicides, Programs and Services
- Diabetes**
Subtopics: Diabetes, Primary Care, Access to Care, Comorbidities and Complications
- Tobacco**
Subtopics: Tobacco Use, Health Environment

Adding:
Institutional Discrimination
dashboard

<https://sharenw.nwcphp.org/>

Featured Trainings

Featured Trainings (Available October 2021)

Understanding Population Health Concepts

Learning objectives:

- Define health equity, health disparities, and health inequities
- Explain how social factors influence health
- Use data to identify connections between social factors and varying health outcomes in a community

Format: Online module

Source: Region 10 Public Health Training Center

Communicating Effectively

Learning objectives:

- Explain the difference between persuasive and informative communication and why both are needed
- Describe your audience and what motivates them
- Identify the most important content/data to share with a specific audience

Format: Online module

Source: Region 10 Public Health Training Center

Visualizing Data Stories

Learning objectives:

- Use appropriate graphic and other visualization techniques for communicating data about health disparities and inequities
- Tailor data messaging and visualizations to a specific audience
- Use design principles to create presentations and data visualizations that tell a "data story"

Format: Online module

Source: Region 10 Public Health Training Center

Jump to:

Featured Trainings and Webinars

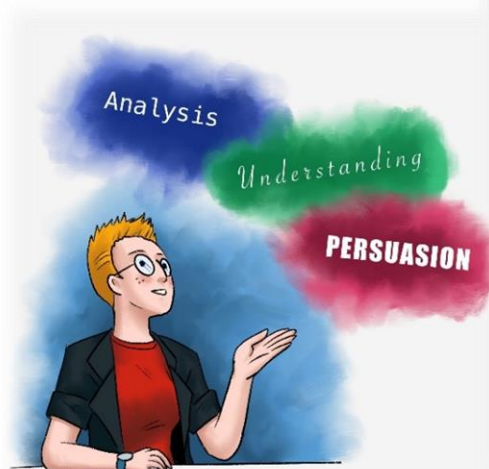
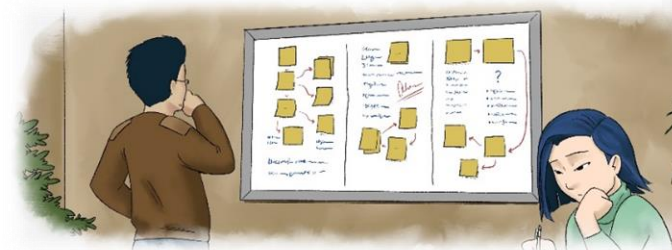
Developed as part of the SHARE-NW project.

Selected Trainings and Webinars

Primary focus on the topic area.

Related Trainings and Webinars

Some content related to the topic area, while the primary focus is on a different topic.

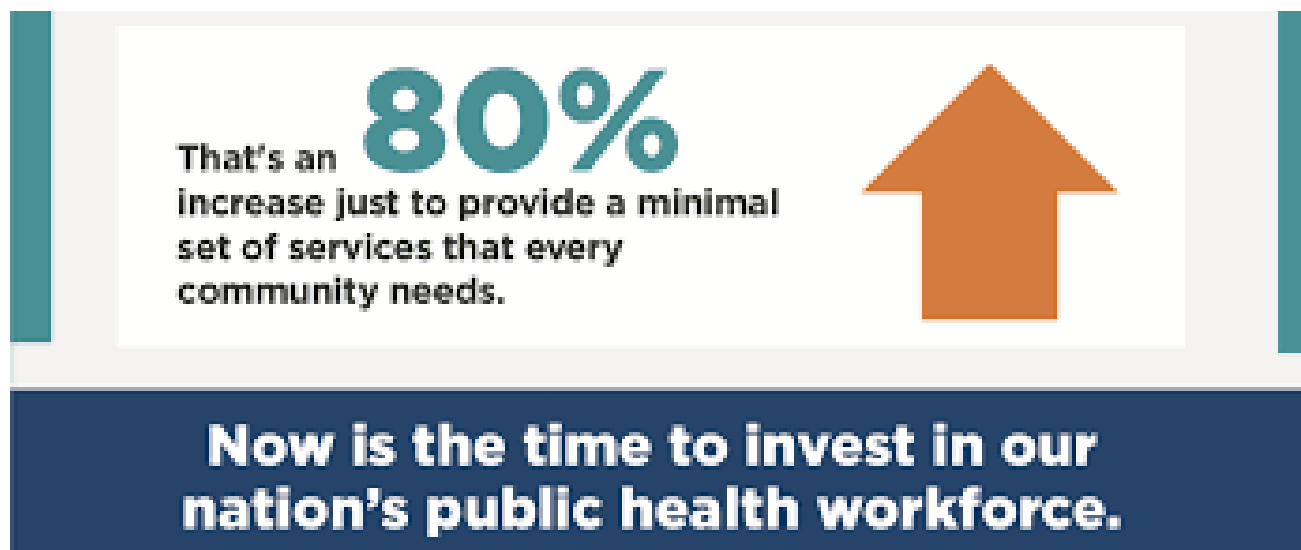


Addressing *Administrative* Public Health Data Gaps

- **Declining funding** for PH highlighted during COVID-19 pandemic
- Need to **make evidence-based case** for PH funding
- Need to **track** revenue streams & COVID **expenses**
- Need to **compare** financial performance & budgets across PH agencies



Staffing Up: Determining Public Health Workforce Levels Needed to Serve the Nation



<https://debeaumont.org/staffing-up/>

de Beaumont
BOLD SOLUTIONS FOR HEALTHIER COMMUNITIES.

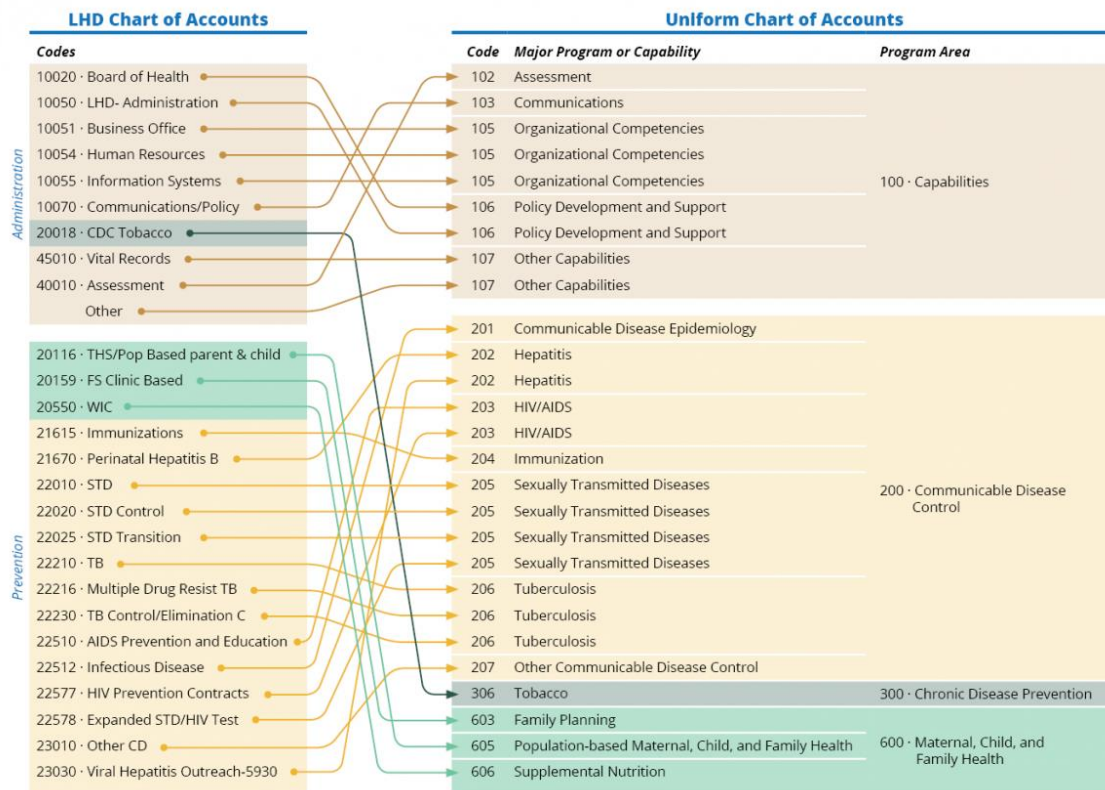
phnci

PHAB

UCOA
PHAST Uniform Chart Of Accounts

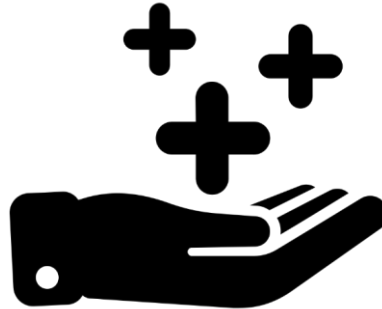
How the UCOA Works

- The Uniform Chart of Accounts **complements**—but does not replace—participating an agency's own COA
- Agencies **crosswalk**—or map—financial information from their agency-specific COA to the UCOA
- Expenditures** and **revenues**, are broken down into key categories



How Agencies are Using the UCOA

- **Quantifying** the financial impact of COVID-19
- Understanding **funding sources** for PH services & activities
- Identifying which programs are **at risk** during funding cuts
- Demonstrating the value & function of public health to **fundors, elected officials, and the public**
-& now the development of the **Staffing Up Workforce Calculator**



Larger Rural PH Data Lessons Learned

- *Public health status* data for addressing local inequities
 - Data accessibility—designed for the USER & for engaging partners
 - HIGH need/interest in TRAINING—data use & understanding, decision-making, engagement, equity
 - Resources for oversampling & data collection
 - For tracking high COVID-affected ‘hot spots’ into the future
- *PH Administration* data for equitable resource allocation
 - Standardization
 - Substantial resources & time
 - Coordination
 - Mandates, incentives

NCVHS Questions Posed

- Issues still remain since April 2021?
 - Yes. Practices being identified.
- Best practices to put in place?
 - User-centered, accessible data; training; standardization
- Data systems needing help?
 - Rural oversampling; Financial data standardization
- Standards needed?
 - PH Administrative data
- Racial/ethnic population data needed?
 - For rural communities

REFERENCES

- Backonja, U., Park, S., Kurre, A., Yudelman, H., Heindel, S., Schultz, M., Whitman, G., Turner, A.M., Marchak, N.T., & Bekemeier, B. (2022, revisions under review). *Supporting rural public health practice to address local-level social determinants of health across Northwest states: Development of an interactive visualization dashboard*.
- Bekemeier, B., Park, S., & Whitman, G. (2019). Challenges and lessons learned in promoting adoption of standardized local public health service delivery data through application of the PHAST model, *J of the American Medical Informatics Association*, 26(12): 1660-1663, doi: 10.1093/jamia/ocz160.
- Bekemeier, B., Singh, S., & Schoemann, A. (2018). A uniform chart of accounts for public health agencies: An “essential ingredient” for a strong public health system. *Journal of Public Health Management and Practice*. 24(3), 289-291.
- Bekemeier, B., Park, S., Backonja, U, Ornelas, I, Turner, A. (2019). Data, capacity-building, and training needs to address rural health inequities in the Northwest U.S. : A qualitative study, *J of the American Medical Informatics Association*, ePub.
- Bekemeier, B. & Park, S.E. (2018). Development of The PHAST Model: Generating standard public health services data and evidence for decision-making, *Journal of the American Medical Informatics Association*, ePub ahead of print.
- Singh, S., Bekemeier, B., & Leider, JP. (2018). Local health departments' spending on the foundational capabilities. *Journal of Public Health Management and Practice*. DOI: 10.1097/PHH.0000000000000922.
- Bekemeier, B., Marlowe, J, Squires, L.S., & Tebaldi, J. (2017). Perceived need versus current spending: Gaps in providing foundational public health services in communities, *Journal of Public Health Management and Practice*. , 24(3):271-280.